

Hazardous Location Fittings

Provides maximum volume for bends within a compact overall size!

Capped Iron Elbow — Female to Female

Application

LBY/GYF elbows are installed in conduit systems within hazardous areas to:

- Make 90° bends in conduit systems where space is limited
- Act as pull outlets
- Provide access to conductors for maintenance and future system changes

Features

- Maximum volume for bends within a compact overall size
- Screw on cover for ease of installation and removal
- Cover opening on an angle, permitting conductors to be pulled straight through either hub
- Tapered threaded hubs and integral bushing for rigid threaded conduit



Standard Materials

LBY Ductile Iron
GYF Copper Free Aluminum

Listings/Compliances (LBY)

Cl. I, Div. 1 & 2, Groups C, D
Cl. II, Div. 1, Groups E, F, G
Cl. III, Div. 1 & 2

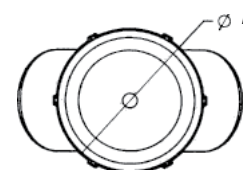
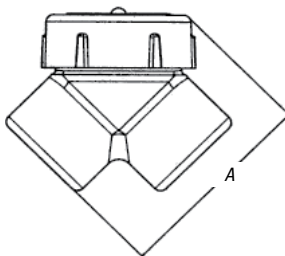
NEMA 3, 4, 7 CD, 9 EFG

Explosion-Proof

Dust-Ignition-Proof

Raintight

Wet Locations



CAT. NO.	HUB SIZE	A	B	THROAT DIM.	
				MIN.	MAX.
LBY15-TB	1/2"	2 ⁷ / ₁₆	2	.570	.610
LBY25-TB	3/4"	2 ⁷ / ₁₆	2 ¹ / ₄	.755	.810
LBY35-TB	1"	3 ³ / ₃₂	2 ¹ / ₂	.955	1.035
LBY45-TB	1 ¹ / ₄ "	3 ³ / ₄	2 ¹⁵ / ₁₆	1.260	1.360
LBY55-TB	1 ¹ / ₂ "	4 ¹ / ₄	3 ³ / ₈	1.470	1.590
LBY65-TB	2"	5 ¹ / ₂	4	1.880	2.047

Capped Aluminum Elbow — Female to Female



CAT. NO.	HUB SIZE	UNIT QTY.	STD. PKG.	WT. LBS. PER 100
GYF-1	1/2"	10	50	23
GYF-2	3/4"	5	25	40
GYF-3	1"	5	25	60
GYF-4•	1 ¹ / ₄ "	2	10	80
GYF-5	1 ¹ / ₂ "	2	10	95

• Made-to-order items. Consult factory for lead time and minimum quantities.