

Liquidtight Fittings

Liquidtight Accessories

SELF-RETAINING PVC GASKET WITH STEEL RING

Applications:

- Used with locknuts in order to obtain watertight seals when connecting Liquidator™ fittings to an enclosure

Certifications and Compliances:

- UL Listed (3/8" to 2")

Standard Material:

- Gasket with steel ring – PVC

Standard Finish:

- PVC – natural

UL File No. E-23223



Cat. #	Trade Size	Unit Qty.	Wt. Lbs. Per 100
SG1	3/8" - 1/2"	100	1
SG2	3/4"	50	2
SG3	1"	50	2
SG4	1 1/4"	25	2
SG5	1 1/2"	25	4
SG6	2"	25	3
SG7	2 1/2"	10	5
SG8	3"	10	10
SG9	3 1/2"	10	12
SG10	4"	10	10
SG11	5"	5	15
SG12	6"	5	22

COMBINATION COUPLINGS FOR COUPLING LIQUIDTIGHT TO THREADED RIGID/IMC CONDUIT

Applications:

- Used to couple liquidtight conduit to threaded rigid and IMC conduit

Certifications and Compliances:

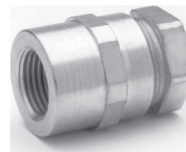
- UL Listed
- cUL Listed
- UL File No. E-19189

Standard Materials:

- Body – malleable iron
- Ferrule – steel

Standard Finish:

- Malleable iron – zinc plated



Cat. #	Trade Size	Unit Qty.	Wt. Lbs. Per 100
LTR38*	3/8"	25	17
LTR50	1/2"	25	29
LTR75	3/4"	25	33
LTR100	1"	5	59
LTR125	1 1/4"	2	105
LTR150	1 1/2"	2	105
LTR200	2"	1	160

*For 3/8" liquidtight to 1/2" rigid/IMC.

COMBINATION COUPLINGS FOR COUPLING LIQUIDTIGHT TO THREADED RIGID/IMC CONDUIT – GROUNDING TYPE ALUMINUM LUG OR COPPER LUG

Applications:

- Used to couple liquidtight conduit to threaded rigid/IMC conduit
- Available with an aluminum or copper grounding lug

Standard Materials:

- Body – malleable iron
- Ferrule – steel
- Lug – aluminum or copper

Standard Finishes:

- Malleable iron – zinc plated
- Aluminum – natural
- Copper – natural



Cat. # Aluminum Ground Lug	Cat. # Copper Ground Lug	Trade Size	Unit Qty.	Wt. Lbs. Per 100
LTR38G*	LTR38GC*	3/8"	25	24
LTR50G	LTR50GC	1/2"	25	30
LTR75G	LTR75GC	3/4"	25	35
LTR100G	LTR100GC	1"	5	59
LTR125G	LTR125GC	1 1/4"	5	81
LTR150G	LTR150GC	1 1/2"	2	107
LTR200G	LTR200GC	2"	1	162

*For 3/8" liquidtight to 1/2" rigid/IMC.