

FEATURED PRODUCTS

Composite Patch Panels **A15**

1RU 48-Port QuickPort® High-Density Flat & Angled Panels **A14, A16**

e2XHD Snap-In Cassette Patching System **A18**

Patch Panels & Cross Connect

Choose Leviton for all your patch panel needs. Our e2XHD high-density panels make patching easier than ever, using snap-in copper and fiber cassettes. Other popular styles include the 1RU 48-port, component-rated Cat 6A 110-style, and composite panels with a customizable face. Additional UTP and shielded panels, the patented Zero-U Vertigo®, die-cast high-density panels, recessed panels for close quarters, and two angled styles round out the industry's largest selection of patch panels.

PATCH PANELS | Recessed-Flat & Recessed-Angled > UTP

Patch Panels

COPPER



Recessed-flat and recessed-angled patch panels are a great option for rack and cabinet installations with minimal front depth, and where rear cabinet doors are in close proximity to the back rail.

RECESSED-FLAT 110-STYLE & QUICKPORT® PATCH PANELS

- 3-inch recessed design allows improved access and maintains proper cable bend radius
- All recessed-flat panels include a screwless cable management bar that fastens directly to the back of the panel
- Recessed-flat 110-style panels include patented magnifying lens label holders for easy reading

RECESSED-ANGLED 110-STYLE & QUICKPORT PATCH PANELS

- Conserve rack space by routing patch cords directly into vertical cable management
- Unique dual-angled design greatly improves punchdown accessibility
- Recessed-angled 110-style panels include a snap-in plastic label holder and card stock labels

AVAILABLE CABLE MANAGEMENT:

See Section E for product details and ordering information.

Versi-Duct®

Rear Cable Management Bars

Horizontal Cable Managers

VELCRO® Brand Fasteners



49005-CMB included with all recessed-flat panels.



4W006-AMB Recommended rear cable management bar for recessed-angled panels



4W254-BC1 Recommended recessed-angled transitional cover for recessed-angled panels

RECESSED-FLAT 110-STYLE & QUICKPORT PATCH PANELS

DESCRIPTION		CAT 6	CAT 5E	EMPTY
1RU 24-Port Recessed-Flat 110-Style Panel	[A]	69586-R24	5G596-R24	—
2RU 48-Port Recessed-Flat 110-Style Panel		69586-R48	5G596-R48	—
1RU 24-Port Recessed-Flat QuickPort Panel		—	—	49255-R24

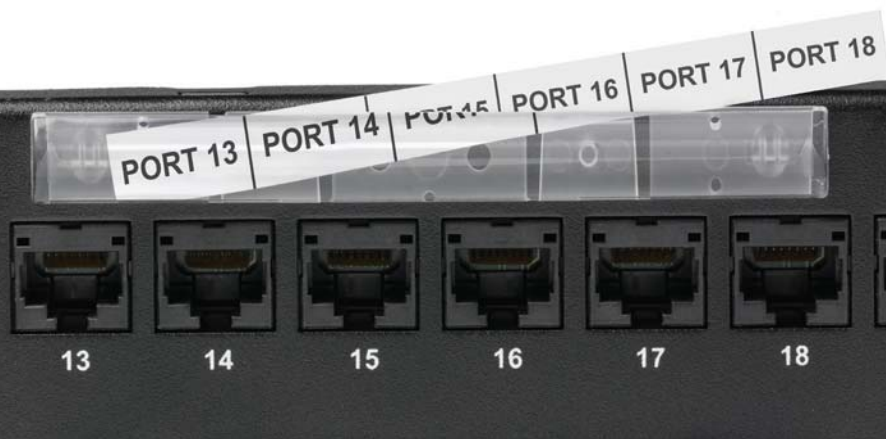
RECESSED-ANGLED 110-STYLE & QUICKPORT PATCH PANELS

2RU 48-Port Recessed-Angled 110-Style Panel	[B]	6W587-U48	5W597-U48	—
1RU 24-Port Recessed-Angled QuickPort Panel		—	—	[C] 4W256-H24
2RU 48-Port Recessed-Angled QuickPort Panel		—	—	4W256-H48

QuickPort connectors are available on pages A8-A10.

SPOTLIGHT

Magnifying Lens Label Holder



Available with a wide selection of Leviton patch panels, Leviton patented magnifying lens label holders ensure visibility of port labels for easy identification of individual port designations.