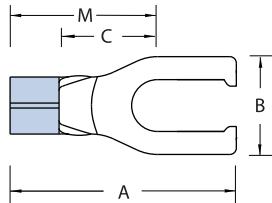


Non-Insulated Locking Fork Terminals

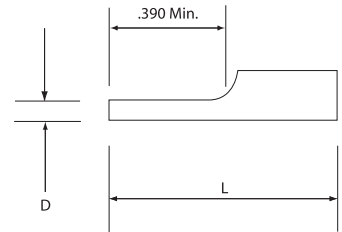


CAT. NO.	PKG. QTY.	WIRE RANGE	BOLT HOLE	REC. TOOL	DIMENSIONS				STOCK THICK.
					A	B	C	M	
A18-6FL	100	22-16	#6	ERG 2002	.75	.25	.27	.59	.02
A221	1,000	22-16	#6		.75	.25	.27	.59	
A18-8FL	100	22-16	#8		.75	.29	.27	.59	
A224	1,000	22-16	#8		.75	.29	.27	.59	
A18-10FL	100	22-16	#10		.75	.29	.27	.59	
A225	1,000	22-16	#10	.75	.29	.27	.59	.03	
B14-6FL	100	18-14	#6	ERG 2002	.75	.25	.27		.59
B220	1,000	18-14	#6		.75	.25	.27		.59
B14-8FL	100	18-14	#8		.75	.29	.27		.59
B223	1,000	18-14	#8		.75	.29	.27		.59
B14-10FL	100	18-14	#10		.75	.29	.27	.59	
B225	1,000	18-14	#10	.75	.29	.27	.59	.04	
C10-6FL	50	12-10	#6	ERG 2005	.85	.31	.27		.66
C220-TB	500	12-10	#6		.85	.31	.27		.66
C10-8FL	50	12-10	#8		.85	.37	.27		.66
C221	500	12-10	#8		.85	.37	.27		.66
C10-10FL	50	12-10	#10		.85	.37	.27	.66	
C222	500	12-10	#10	.85	.37	.27	.66	.04	
C10-14FL	50	12-10	¼"	.85	.49	.27	.66		

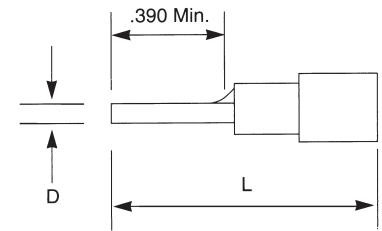
Pin Terminals



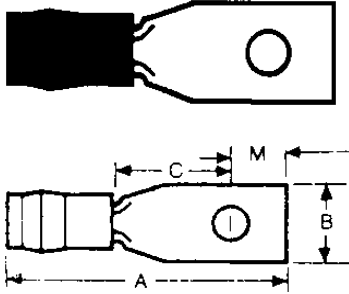
Non-Insulated Pin Terminal



Insulated Pin Terminal



CAT. NO.	PKG. QTY.	WIRE RANGE	D (DIA.)	L	REC. TOOLS	STOCK THICK.
Non-Insulated						
A47PT	1,000	22-18	.075	.63	ERG2002	.02
B47PT	1,000	16-14	.075	.63		.03
C55PT	500	12-10	.106	.76		.04
Vinyl						
18RA-47PT	100	22-18	.075	.85	ERG2001	.02
RA47PT	1,000	22-18	.075	.85		.03
14RB-47PT	100	16-14	.075	.87		
RB47PT	1,000	16-14	.075	.87		.04
10RC-55PT	50	12-10	.106	1.04		
RC55PT	500	12-10	.106	1.04		
Nylon						
RA18-47PT	100	22-18	.075	.85	.02	
RA147PT	1,000	22-18	.075	.85		
RB14-47PT	100	16-14	.075	.87	.03	
RB147PT	1,000	16-14	.075	.87		
RC10-55PT	50	12-10	.106	1.04	.04	
RC155PT	500	12-10	.106	1.04		



Stock Thickness:

RA & RB = .03

RC = .04

Note:

22-18 ga. = 1-2 Navy

16-14 ga. = 2½-4 Navy

12-10 ga. = 6-9 Navy

Nylon Insulated Rectangular L80



Cat. No.	Stud Size	Wire Range	Dimensions				Bu-Ships Tongue Shape
			A	B	C	M	
Series RA							
RA486	#4	22-18	.796	.237	.237	.143	L86P-1
RA485	#4	22-18	1.015	.237	.404	.195	L85P-1
RA483	#5	22-18	.859	.277	.277	.143	L83P-1
RA484	#6	22-18	1.015	.237	.404	.195	L84P-1
RA481	#6	22-18	1.109	.302	.465	.227	L81P-1
RA482	#8	22-18	1.109	.302	.465	.227	L82P-1
RA480**	#8	22-18	1.359	.390	.621	.310	L80P-1
Series RB							
RB486	#4	16-14	.796	.237	.237	.143	L86P-2
RB485	#4	16-14	1.015	.237	.404	.195	L85P-2
RB483	#5	16-14	.859	.277	.277	.143	L83P-2
RB484	#6	16-14	1.015	.237	.404	.195	L84P-2
RB481	#6	16-14	1.109	.302	.465	.227	L81P-2
RB482	#8	16-14	1.109	.302	.465	.227	L82P-2
RB480**	#8	16-14	1.359	.390	.621	.310	L80P-2
Series RC							
RC486	#4	12-10	.984	.237	.237	.143	L86P-3
RC485	#4	12-10	1.187	.237	.404	.195	L85P-3
RC483	#5	12-10	1.046	.277	.277	.143	L83P-3
RC484	#6	12-10	1.203	.237	.404	.195	L84P-3
RC481	#6	12-10	1.281	.302	.465	.227	L81P-3
RC482	#8	12-10	1.281	.302	.465	.227	L82P-3
RC480**	#8	12-10	1.531	.390	.621	.310	L80P-3

** Not available on tape.

Note: RA, RB, RC486 for use with BU-Ships terminal board types 26TB. RA, RB, RC485 for use with 25TB and 27TB. RA, RB, RC483 for use with 8TB. RA, RB, RC484 for use with 10TB and 11TB. RA, RB, RC481 for use with 6TB, 7TB and 9TB. RA, RB, RC482 for use with 15TB. RA, RB, RC480 for use with 3TB, 4TB, 5TB, 16TB, 17TB and 18TB.

Note: When ordering terminals on tape add the suffix **M**, example: (RA250M), to the catalog number.

U.L. Listed E9809

Installing Tools: ERG2001, WT145C

Most standard bulk catalog numbers can be put on Mylar Tape for reel fed applications (i.e. 12050 tool and application dies). See page O1149.

Please put the suffix M for Mylar Tape RA2573M. (Bulk number 1000 and 500 packages.)