

# of Contacts + Ground Connection

Bases – Standard Mount				6	10	16		
SINGLE LEVER	DOUBLE LEVER	HOUSING	NPT ENTRY	LEVER LOCKING TYPE				
				SINGLE	SINGLE	DOUBLE	SINGLE	DOUBLE
		Panel Base w/Cover		PB306** PB406**	PB310 PB410**	PB110E	PB316** PB416**	PB116E
		Box Base no Cover	1 X 1/2" 1 X 3/4" 1 X 1" 2 X 1/2" 2 X 3/4" 2 X 1"	BB406 BB406H075 BB406H100 BB506 BB506H075 BB506H100	BB410 BB410H075 BB410H100 BB510 BB510H075 BB510H100	BB010E BB010EH075 BB010EH100 BB110E BB110EH075 BB110EH100	BB416* BB416H100	BB016E* BB016EH100 BB116E* BB116EH100
		Box Base w/Cover	1 X 1/2" 1 X 3/4" 1 X 1" 2 X 1/2" 2 X 3/4" 2 X 1"	BB606** BB606H075** BB606H100** BB706** BB706H075** BB706H100**	BB610** BB610H075** BB610H100** BB710** BB710H075** BB710H100**		BB616** BB616H100**	BB716** BB716H100**

Hoods — Standard Mount				<i>*Plastic body — "B" 3-16 Series standard Hoods include Gaskets: Bases and Special Hoods do not.</i>				
		Side Entry	1 X 1/2" 1 X 3/4" 1 X 1"	SH606 SH606H075 SH606H100	SH610 SH610H075 SH610H100	SH010 SH010H075 SH010H100	SH616 <sup>†</sup> SH716H <sup>†</sup>	SH016 <sup>†</sup> SH116H
		Top Entry	1 X 1/2" 1 X 3/4" 1 X 1"	TH806 TH806H075 TH806H100	TH810 TH810H075 TH810H100	TH210 TH210H075 TH210H100	TH816 <sup>†</sup> TH816H100	TH216 <sup>†</sup> TH316H

Coupler Hoods – Inline				<i>For Inline, Portable or Special Service Connections. Coupler Hoods mate to Standard Hoods ONLY.</i>				
		Top Entry	1 X 1/2" 1 X 3/4" 1 X 1"	CH806H CH806H075 CH806H100	CH810E CH810H075 CH810H100	CH610E CH610EH075 CH610EH100	CH816H CH916H	CH616EH CH716EH

Lever Hoods – Reverse Locking				<i>Lever Hoods mate to Post Bases ONLY.</i>				
		Side Entry w/Lever(s)	1 X 1/2" 1 X 3/4" 1 X 3/4"			LH010E LH010EH075 LH010EH100		LH016E* LH116EH
		Top Entry w/Lever(s)	1 X 1/2" 1 X 3/4" 1 X 1"			LH210E LH210EH075 LH210EH100		LH216E* LH316EH

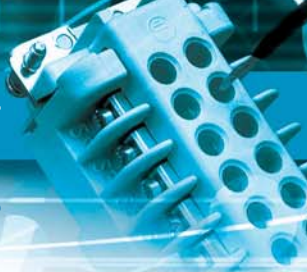
Bases – with Access Cover				<i>Post Bases accept Lever Hoods ONLY.</i>				
		Panel+ Posts Posts w/Cover				PB210**		PB216**
		Box Base+ Posts w/Cover	1 X 1/2" 1 X 3/4" 1 X 1" 2 X 1/2" 2 X 3/4" 2 X 1"			BB210** BB210H075** BB210H100** BB310** BB310H075** BB310H100**		BB216** BB216H100** BB316** BB316H100**

\* Notes: Available in Standard or HIGH Profile "H" configurations. (-add suffix)

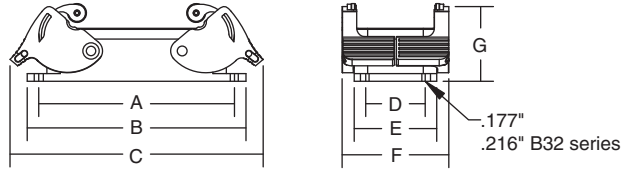
\*\* Add "M" final suffix for metal cover option.

† Both HIGH (H) and LOW (L) profile also available. (-add suffix)

Pos-E-Kon® Pin and Sleeve Connectors

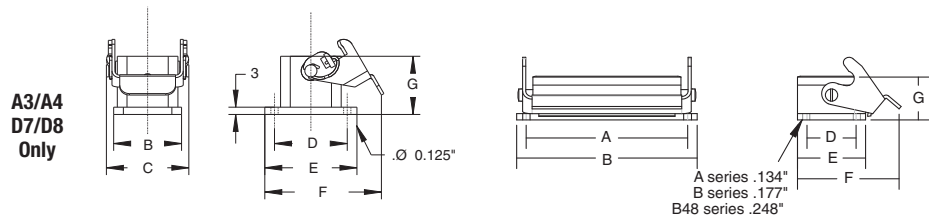


### Mounting Dimensions for Double Lever Panel Bases



HOUSING SERIES				CAT. NO.	DIMENSIONS ARE IN INCHES / (MILLIMETRES)						
A, B, T, K	C, V	D	DD		A	B	C	D	E	F	G
A32	D50			<b>PB132A</b>	3.62 / (92)	4.02 / (102)	5.04 / (128)	1.65 / (28)	2.24 / (57)	2.76 / (70)	1.10 / (28)
B10, T10	V3		DD42	<b>PB110E</b>	3.27 / (83)	3.66 / (93)	4.33 / (110)	1.26 / (32)	1.69 / (43)	2.28 / (58)	1.06 / (27)
B16, T16	C6, V6	D40	DD72	<b>PB116E</b>	4.05 / (103)	4.49 / (114)	5.16 / (131)	1.26 / (32)	1.69 / (43)	2.28 / (58)	1.06 / (27)
B24, T24,	V10, V16	D64	DD108	<b>PB124E</b>	5.12 / (130)	5.51 / (140)	6.19 / (157)	1.26 / (32)	1.69 / (43)	2.28 / (58)	1.06 / (27)
B32	C12	D80	DD144	<b>PB132E</b>	4.33 / (110)	4.88 / (124)	5.28 / (134)	2.56 / (65)	3.11 / (79)	3.62 / (92)	1.18 / (30)

### Mounting Dimensions for Single Lever Panel Bases



HOUSING SERIES				CAT. NO.	DIMENSIONS ARE IN INCHES / (MILLIMETRES)						
A, B, T, K	C, V	D	DD		A	B	C	D	E	F	G
A3, A4		D7, D8		<b>PB303A (P)*</b>	—	1.10 / (28)	1.34 / (34)	1.18 / (30)	1.50 / (38)	1.67 / (42.5)	.95 / (24)
				<b>PB403A (P)*</b>	—	1.10 / (28)	1.38 / (35)	1.18 / (30)	1.58 / (40)	1.85 / (47)	.95 / (24)
				<b>PB503A (P)</b>	1.10 / (28)	1.59 / (40.5)	1.00 / (25.5)	1.42 / (36)	1.18 / (30)	1.50 / (38)	
A10		D15		<b>PB310A</b>	2.76 / (70)	3.19 / (81)	—	.68 / (17.5)	1.20 / (30.5)	1.93 / (49)	1.02 / (26)
A16		D25		<b>PB410A</b>	2.76 / (70)	3.19 / (81)	—	.68 / (17.5)	1.20 / (30.5)	2.95 / (75)	1.02 / (26)
				<b>PB316A</b>	3.39 / (86)	3.78 / (96)	—	.68 / (17.5)	1.20 / (30.5)	1.93 / (49)	1.02 / (26)
B6, T6			DD24	<b>PB416A</b>	3.39 / (86)	3.78 / (96)	—	.68 / (17.5)	1.20 / (30.5)	2.95 / (75)	1.02 / (26)
				<b>PB306</b>	2.76 / (70)	3.15 / (80)	—	1.26 / (32)	1.69 / (43)	2.56 / (65)	1.06 / (27)
B10, T10	V3		DD42	<b>PB406</b>	2.76 / (70)	3.15 / (80)	—	1.26 / (32)	1.69 / (43)	3.54 / (90)	1.06 / (27)
				<b>PB310</b>	3.27 / (83)	3.66 / (93)	—	1.26 / (32)	1.69 / (43)	2.64 / (67)	1.06 / (27)
B16, T16	C6, V6	D40	DD72	<b>PB410</b>	3.27 / (83)	3.66 / (93)	—	1.26 / (32)	1.69 / (43)	3.62 / (92)	1.06 / (27)
				<b>PB316</b>	4.06 / (103)	4.49 / (114)	—	1.26 / (32)	1.69 / (43)	2.64 / (67)	1.06 / (27)
B24, T24,	V10, V16	D64	DD108	<b>PB416</b>	4.06 / (103)	4.49 / (114)	—	1.26 / (32)	1.69 / (43)	3.62 / (92)	1.06 / (27)
				<b>PB324</b>	5.12 / (130)	5.51 / (140)	—	1.26 / (32)	1.69 / (43)	2.64 / (67)	1.06 / (27)
B48, K24,	V20, V26	D128	DD216	<b>PB424</b>	5.12 / (130)	5.51 / (140)	—	1.26 / (32)	1.69 / (43)	3.62 / (92)	1.06 / (27)
				<b>PB348</b>	5.83 / (148)	6.50 / (165)	—	2.76 / (70)	3.54 / (90)	6.18 / (157)	1.61 / (41)
V32				<b>PB448</b>	5.83 / (148)	6.50 / (165)	—	2.76 / (70)	3.54 / (90)	6.81 / (173)	1.61 / (41)

\*Suffix: A - Aluminum, P - Plastic