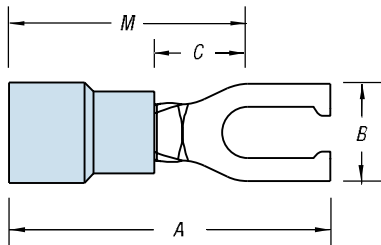


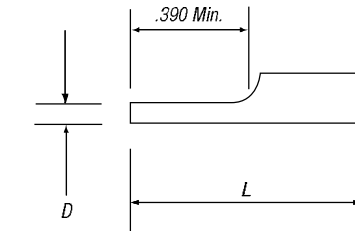
## Fork Terminals and Pin Terminals

### Non-Insulated Locking Fork Terminals

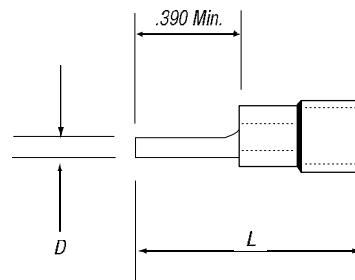


CAT. NO.	PKG. QTY.	WIRE RANGE	BOLT HOLE	REC. TOOL	DIMENSIONS				STOCK THICK.	
					A	B	C	M		
A18-6FL	100	22-16	#6	ERG4002	.75	.25	.27	.59	.02	
A221	1,000	22-16	#6		.75	.25	.27	.59		
A18-8FL	100	22-16	#8		.75	.29	.27	.59		
A224	1,000	22-16	#8		.75	.29	.27	.59		
A18-10FL	100	22-16	#10		.75	.29	.27	.59		
A225	1,000	22-16	#10		.75	.29	.27	.59		
B14-6FL	100	18-14	#6	ERG4002 ERG4005	.75	.25	.27	.59	.03	
B220	1,000	18-14	#6		.75	.25	.27	.59		
B14-8FL	100	18-14	#8		.75	.29	.27	.59		
B223	1,000	18-14	#8		.75	.29	.27	.59		
B14-10FL	100	18-14	#10		.75	.29	.27	.59		
B225	1,000	18-14	#10		.75	.29	.27	.59		
C10-6FL	50	12-10	#6		.85	.31	.27	.66		.04
C220-TB	500	12-10	#6		.85	.31	.27	.66		
C10-8FL	50	12-10	#8	.85	.37	.27	.66			
C221	500	12-10	#8	.85	.37	.27	.66			
C10-10FL	50	12-10	#10	.85	.37	.27	.66			
C222	500	12-10	#10	.85	.37	.27	.66			
C10-14FL	50	12-10	1/4"	.85	.49	.27	.66			

### Pin Terminals



Non-Insulated Pin Terminal



Insulated Pin Terminal



CAT. NO.	PKG. QTY.	WIRE RANGE	D (DIA.)	L	REC. TOOLS	STOCK THICK.
<b>Non-Insulated</b>						
A47PT	1,000	22-18	.075	.63	ERG4002	.02
B47PT	1,000	16-14	.075	.63		.03
C55PT	500	12-10	.106	.76		.04
<b>Vinyl</b>						
18RA-47PT	100	22-18	.075	.85	ERG4001	.02
RA47PT	1,000	22-18	.075	.85		.03
14RB-47PT	100	16-14	.075	.87		
RB47PT	1,000	16-14	.075	.87		.04
10RC-55PT	50	12-10	.106	1.04		.04
RC55PT	500	12-10	.106	1.04		
<b>Nylon</b>						
RA18-47PT	100	22-18	.075	.85	ERG4001	.02
RA147PT	1,000	22-18	.075	.85		.03
RB14-47PT	100	16-14	.075	.87		
RB147PT	1,000	16-14	.075	.87		.04
RC10-55PT	50	12-10	.106	1.04		.04
RC155PT	500	12-10	.106	1.04		

Wire Termination — Sta-Kon® Wire Termination & Insulation