

Compression Connections

BURNDY®

Copper Compression — Code — Long Barrel — Splice

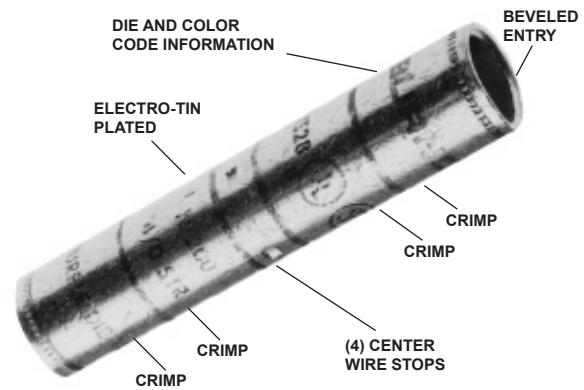
TYPE YS

HYLINK™ SPLICE - LONG BARREL

C-146

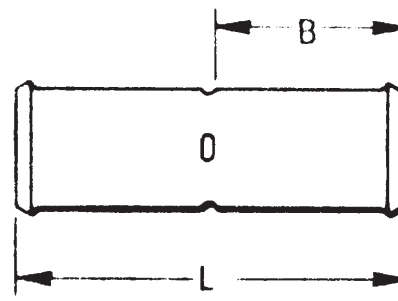
COPPER COMPRESSION SPLICE

UL Listed 90° C, Up to 35 kV ♦



Features & Benefits

- Copper seamless barrel has center stop indentations used to indicate when wire is fully inserted into each side of the barrel
- Barrel is designed with an internal chamfer at the wire entry to ensure smooth insertion of the wire, preventing possible damaging of the wire strands during insertion
- Electro-tin plated unless otherwise specified to reduce galvanic corrosion (bimetallic) and resist corrosive elements
- Barrel is color coded to ensure proper die and installation tooling is selected
- Long barrel allows for an increased number of crimps which will increase the mechanical strength of the connection while allowing the connection to operate at a lower temperature rating

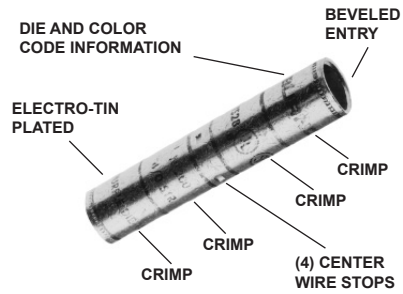


TYPE YS

HYLINK™ SPLICE - LONG BARREL

COPPER COMPRESSION SPLICE

UL Listed 90° C, Up to 35 kV ♦
(Continued)



C-147

Catalog Number	Conductor		Dimensions		Dieless (# of crimps)	Installation Tooling ▲						Wire Strip Length	
	AWG	mm²	L	B		Mechanical			Y35†, Y39, Y750, Y46		▲ Die Index & Embossment		
						Y1MRTC	MD7-34R	MD6 OUR840	Die Number (# crimps)	Color Code			
YS8C	8 Str.	10	1.75	0.78	Y / PAT81KFT (1)	Y1MRTC (2)	W8CVT (2)	X8CRT (2)	U8CRT (2)	Red	49	7/8	
YS6C	6 Str.	—	2.38	1.09			W5CVT (2)	X5CRT (2)	U5CRT (2)	Blue	7 or 374	1-3/16	
YS5C	5 Str.	16	2.55	1.09			W5CVT (2)	X5CRT (2)	U5CRT (2)	Blue	7 or 374	1-3/16	
YS4C	4 Str.	—	2.55	1.09		Y1MRTC (4)	W4CVT (2)	X4CRT (2)	U4CRT (2)	Gray	8 or 346	1-3/16	
YS3C	3 Str./2 Sol.	25	2.80	1.22	—		U3CRT (2)	—	White	9	1-5/16		
YR2C2WT	2 Str. - 2Sol.	25	3.03	1.25	W2CVT (2)		W2CVT (2)	W2CRT (2)	U2CRT (2)	Brown	10	1-5/8	
YS2C	2 Str.	35	2.82	1.22	W2CVT (2)		X2CRT (2)	U2CRT (2)	Brown	10	1-5/16		
YS1C	1 Str.	50	3.07	1.34	Y / PAT81KFT (2)		W1CVT (2)	X1CRT-1 (2)	U1CRT-1 (2)	Green	11 or 375	1-7/16	
YS25	1/0 Str.	—	3.08	1.34			—	W25VT (4)	X25RT (4)	U25RT (2)	Pink	12 or 348	1-7/16
YS26	2/0 Str.	70	3.30	1.45			—	W26VT (4)	X26RT (4)	U26RT (2)	Black	13	1-9/16
YS27	3/0 Str.	—	3.30	1.45			—	W27VT (4)	X27RT (4)	U27RT (2)	Orange	14	1-9/16
YS28	4/0 Str.	—	3.57	1.58			—	W28VT (4)	X28RT (4)	U28RT (2)	Purple	15	1-11/16
YS29	250 kcmil	120	3.58	1.58			—	W29VT (4)	—	U29RT (2)	Yellow	16	1-11/16
YS30	300 kcmil	150	4.34	1.95		Y / PAT81KFT (3)	—	W30VT (4)	—	U30RT (4)	White	17 or 298	2-1/16
YS31	350 kcmil	185	4.35	1.95			—	W31VT (4)	—	U31RT (4)	Red	18 or 324	2-1/16
YS32	400 kcmil	—	4.62	2.08	—		W32VT (4)	—	U32RT (4)	Blue	19 or 470	2-3/16	
YS34	500 kcmil	240	4.91	2.20	Y / PAT81KFT (4)	—	W34VT (4)	—	U34RT (4)	Brown	20 or 299	2-5/16	
YS36	600 kcmil	300	5.85	2.63		—	—	—	U36RT (4)	Green	22 or 472	2-3/4	
YS39	750 kcmil	—	6.38	2.81		—	—	—	U39RT (4)	Black	24	2-15/16	
YS44	1000 kcmil	500	6.55	2.94		—	—	—	P44RT (2)	White	27	3-1/16	
YS46	1500 kcmil	—	7.01	3.13	—	—	—	P46RT (6)	Green	31	3-1/4		
YS48	2000 kcmil	—	7.57	3.27	—	—	—	L48RT (4)	Brown	34	3-3/8		

① Not color coded.
* Use PUADP-1 adapter with U dies in Y46 HYPRESS™.
** P44RT for use with Y46 HYPRESS™ only. PUADP-1 adapter not required.

*** The MM² conductor sizes listed are the recommendations for Class 2 conductor.
■ The maximum size for the Y35 is 400 kcmil.
▲ See tooling section of this catalog for complete tool and die listings

♦ For applications greater than 2000 Volts consult cable manufacturer for voltage stress relief instructions.
† Requires Y60BHU HYPRESS™ with L48RT die set.
Note: All dimensions shown are for reference only.