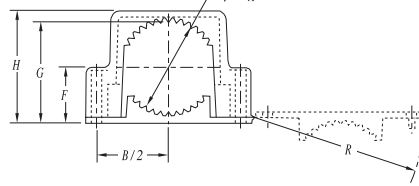
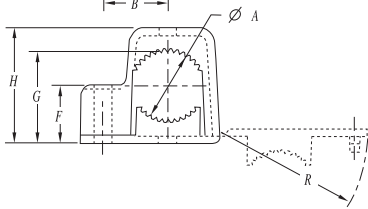
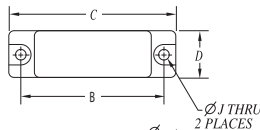
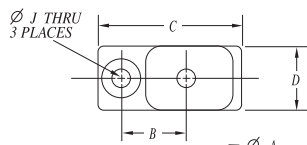


Support Straps

Snap Strap® Conduit – Support Straps

Carlton's Snap Strap® offers a unique support strap designed especially for the installation of PVC conduit. Also suitable for installations of rigid steel. This high strength, nonmetallic clamp allows conduit to expand and contract freely, eliminating the bowing commonly seen from the expansion and contraction of conduit caused by varying temperature changes. Finished installations have a neat, attractive appearance on exposed applications. To be used in accordance with conduit spacing requirements per Section 12-1114 of the CEC. This part is not supplied with screws.

- UV inhibited for use in direct sunlight



Single Mount

Double Mount

Single Mount

Cat. No.	Size in. (mm)	Std. Ctn. Qty.	Std. Ctn. Wt. (lb.)	Dimensions in. (mm)								
				A	B	C	D	F	G	H	J	R
E978DC-CAR	1/2 (16)	40	1	0.80 (20.3)	0.75 (1.90)	1.63 (41.4)	0.75 (19.1)	0.59 (14.9)	0.99 (25.1)	1.36 (34.5)	0.21 (5.33)	1.67 (42.4)
E978EC-CAR	3/4 (21)	40	3	1.00 (25.4)	0.88 (22.4)	1.92 (48.7)	0.75 (19.1)	0.70 (17.8)	1.20 (30.4)	1.57 (39.9)	0.21 (5.33)	1.96 (49.8)
E978FC-CAR	1 (27)	30	4	1.20 (30.5)	1.02 (25.9)	2.17 (55.1)	0.75 (19.1)	0.83 (21.1)	1.43 (36.3)	1.84 (46.7)	0.21 (5.33)	2.22 (56.3)

Double Mount

Cat. No.	Size in. (mm)	Std. Ctn. Qty.	Std. Ctn. Wt. (lb.)	Dimensions in. (mm)								
				A	B	C	D	F	G	H	J	R
E978GC-CAR	1-1/4 (35)	15	4	1.66 (42.16)	2.75 (69.9)	3.23 (82.0)	1.00 (25.4)	0.95 (24.1)	1.78 (45.2)	2.15 (54.61)	0.218 (5.54)	3.28 (83.3)
E978HC-CAR	1-1/2 (41)	15	5	1.92 (48.77)	3.05 (77.5)	3.53 (89.7)	1.00 (25.4)	1.08 (27.4)	2.04 (51.8)	2.40 (60.96)	0.218 (5.54)	3.58 (90.9)
E978JC-CAR	2 (53)	10	5	2.34 (59.44)	3.50 (88.9)	4.00 (101.6)	1.00 (25.4)	1.31 (33.3)	2.48 (63.0)	2.86 (72.64)	0.218 (5.54)	4.06 (103.1)