

CP 600V Cable Protectors

Cable Protectors

Mersen CP Cable Protectors are special purpose limiters which are crimped or bolted to cables or terminals to clear and isolate faults quickly, increasing the reliability of service entrance and distribution runs. CP Cable Protectors have a 200,000A interrupting rating, yet will carry low cable overloads which are handled by standard protective devices. Cable protectors are rated in terms of cable size and material (Al or Cu). Heavier duty CPH cable protectors are available on special order. Heat shrinkable (HS) tubing can be specified for field installation. TI blown fuse trigger indicators may be available upon request. Refer to the application information section for more information.

Features/Benefits:

- Fiberglass bodies for dimensional stability in harsh environments
- Catalog number stamped into terminal for permanent identification
- Crimp terminals for aluminum cable include oxide inhibitor
- Molded rubber boots or heat shrinkable tubing available for insulation and protection
- Current limiting device
- Permitted by National Electric Code



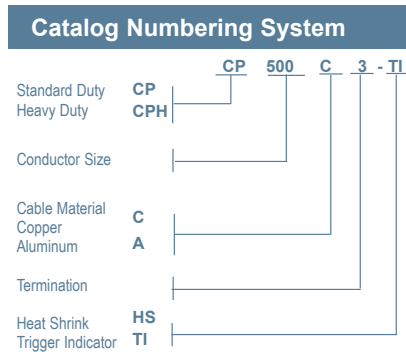
Ratings:

Sizes #2 to 1000kcmil aluminum or copper

Volts : 600VAC
IR : 200kA I.R. AC

Approvals:

- UL listed to File E305297



*Please consult factory for special terminations.

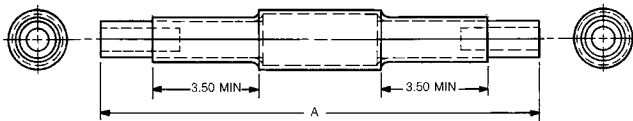
Type	Description	Cable Size	Catalog # for Cable Type			
			Copper	Aluminum		
1	Cable to Cable	2	CP2C1	-		
		1/0	CP1/0C1	-		
		2/0	CP2/0C1	-		
		4/0	CP4/0C1	CP4/0A1		
		250kcmil	CP250C1	CP250A1		
		350kcmil	CP350C1	CP350A1		
		400kcmil	CP400C1	-		
		500kcmil	CP500C1	CP500A1		
		600kcmil	CP600C1	CP600A1		
		750kcmil	CP750C1	CP750A1		
3	Cable to Offset Bus	2	CP2C3	-		
		1/0	CP1/0C3	-		
		2/0	CP2/0C3	-		
		4/0	CP4/0C3	CP4/0A3		
		250kcmil	CP250C3	CP250A3		
		350kcmil	CP350C3	CP350A3		
		400kcmil	CP400C3	-		
		500kcmil	CP500C3	CP500A3		
		600kcmil	CP600C3	CP600A3		
		750kcmil	CP750C3	CP750A3		
5	Straight Bus to Offset Bus	2/0	CP2/0C5	CP2/0C5		
		4/0	CP4/0C5	CP4/0C5		
		250kcmil	CP250C5	CP250C5		
		350kcmil	CP350C5	CP350C5		
		500kcmil	CP500C5	CP500C5		
		600kcmil	CP600C5	CP600C5		
		750kcmil	CP750C5	CP750C5		
		6	Mole to Cable	4/0	CP4/0C6	CP4/0A6
				250kcmil	CP250C6	CP250A6
				350kcmil	CP350C6	CP350A6
400kcmil	CP400C6			-		
500kcmil	CP500C6			CP500A6		
750kcmil	CP750C6			CP750A6		
8	Mole to Offset Bus	4/0	CP4/0C8	CP4/0C8		
		250kcmil	CP250C8	CP250C8		
		350kcmil	CP350C8	CP350C8		
		500kcmil	CP500C8	CP500C8		
		750kcmil	CP750C8	CP750C8		

CP 600V Cable Protectors

Aluminum Cable Protectors with Heat Shrinkable Tubing*

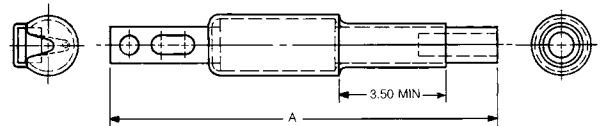
Type A1, Aluminum Cable – Dimensions

Cable Size	A		Catalog No. Cable Protector With Heat Shrinkable Tubing
	Inches	(mm)	
4/0	13.88	(353)	CP4/0A1-HS
250kcmil	13.88	(353)	CP250A1-HS
350kcmil	13.88	(353)	CP350A1-HS
500kcmil	15.38	(391)	CP500A1-HS
750kcmil	15.50	(394)	CP750A1-HS



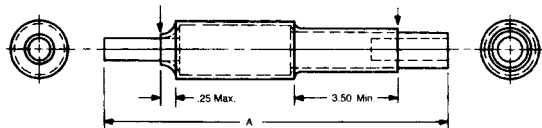
Type A3, Aluminum Cable – Dimensions

Cable Size	A		Catalog No. Cable Protector With Heat Shrinkable Tubing
	Inches	(mm)	
250kcmil	12.25	(311)	CP250A3-HS
350kcmil	12.25	(311)	CP350A3-HS
4/0	12.25	(311)	CP4/0A3-HS
500kcmil	13.00	(330)	CP500A3-HS
750kcmil	13.12	(333)	CP750A3-HS



Type A6, Aluminum Cable – Dimensions

Cable Size	A		Catalog No. Cable Protector With Heat Shrinkable Tubing
	Inches	(mm)	
4/0	11.25	(286)	CP4/0A6-HS
250kcmil	11.25	(286)	CP250A6-HS
350kcmil	11.25	(286)	CP350A6-HS
500kcmil	12.38	(314)	CP500A6-HS
750kcmil	12.50	(318)	CP750A6-HS



* Transparent heat shrinkable tubing is supplied separately with -HS Catalog Numbers. Maximum curing conditions: 5 seconds at 450°F.

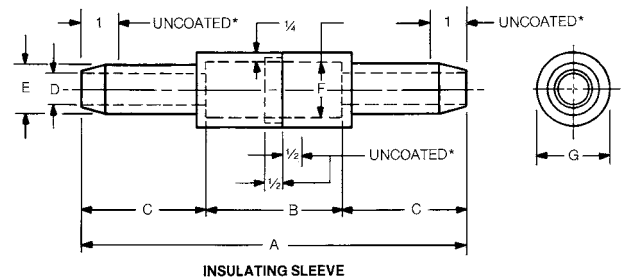
Type 5 – Use Copper Cable Protectors Type C5

Type 8 – Use Copper Cable Protectors Type C8

Molded Rubber Insulating Sleeves**

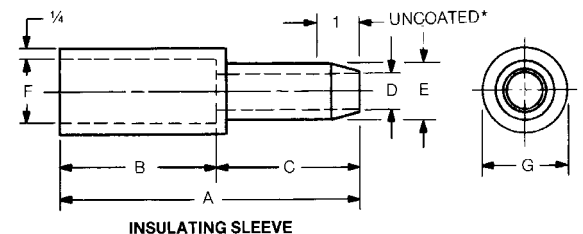
For Type C1 Copper Cable Protectors – Dimensions

Catalog No.	Cable Size	Dimensions - Inches (mm)						
		A	B	C	D	E	F	G
4/0CCR	4/0	10.44 (265)	3.69 (94)	3.38 (86)	.83 (21)	1.33 (33)	1.50 (38)	2.00 (51)
500CCR	500kcmil	14.19 (360)	3.69 (94)	5.25 (133)	1.31 (33)	1.81 (46)	1.94 (49)	2.44 (62)



For Type C3 Copper Cable Protectors – Dimensions

Catalog No.	Cable Size	Dimensions - Inches (mm)						
		A	B	C	D	E	F	G
4/0C3BR	4/0	7.06 (179)	3.69 (94)	3.38 (86)	.83 (21)	1.33 (33)	1.50 (38)	2.00 (51)
500C3BR	500kcmil	8.94 (227)	3.69 (94)	5.25 (133)	1.31 (33)	1.81 (46)	1.94 (49)	2.44 (62)



** Molded rubber insulating sleeves are ordered by their own catalog numbers, and not as suffixes to the cable protector catalog numbers. Neoprene coated except as noted.