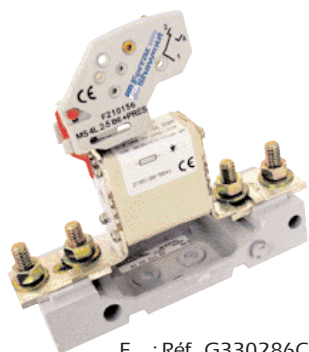


Protistor® Square-body Fuses PSC gGR sizes 000/00 gGR - 690 VAC DIN 00/000 (full range)



F : Réf. D302108
MC: Réf. F210156C



F : Réf. G330286C
PF : Réf. Q098040C
MC: Réf. F210156C

gGr: two functions

A combination of: Power supply cable protection (gG curve)

- Compliance with the standardized gate values for gG curves as per EN 60269-2,
- Low power dissipation, similar to a gG fuse, no current derating in holders,
- No derating for variable currents,
- Good withstand to overloads,
- Same thermal definition as a gG curve,
- Unnecessary to dimension the cable cross sectional area large in comparison to UR protection,
- Range designed for the new voltage of 690V \pm 10%.

Power semi-conductor protection (Fast R curve)

- Fast curve for fault currents and short-circuit currents under 20 In,
- Tested breaking capacity 100 kA (00) or 170 kA (000) at 690 V,
- Very current limiting, which in turn limits electrodynamic forces in the circuit downstream,
- Low I²t
- Compact footprint: only one fuse instead of two or a relay plus a fuse,
- DC performances 360 to 550V for I/R = 10 ms,
Semi-conductor protection checked in the same way as a fuse.

Applications: "off-board" protection

- AC and DC speed governor,
- Soft starter,
- Static relay,
- Current regulator,
- Inverter (IGBT module disconnecter in parallel),
Battery.

Connection technologies offered

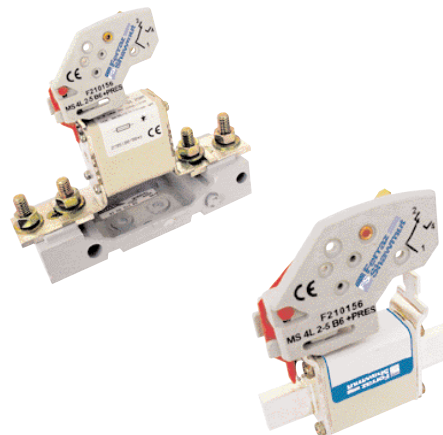
- Solid blades (as per DIN 43620) with visual blown fuse indicator and striker to actuate a micro-switch, MS4L2-5B + PRES (ref. F210156C or G210157C),
- DIN 80 brackets (as per DIN 43653) with visual blown fuse indicator and striker indicator to actuate a microswitch, MS4L2-5B + PRES.
- With these two technologies the designer can choose a fuse according to the types of holders desired.

Semiconductor (AC) fuses



Protistor® Square-body Fuses PSC gGR sizes 000/00 gGR - 690 VAC DIN 00/000 (full range)

- EN 60269-2-1 compliant
- Compliance with gG gate values on melting and not melting
- Low dissipated power
- No derating for variable current
- Good withstand to repeated overloading
- Withstand to exceptional overloads (same as Protistor fuses)
- Cable protection



Functionalities

Two functions:

- to protect cables from overloads,
- to protect semi-conductors from short-circuits.

Electrical characteristics

Size 000

Voltage Rating (VAC)	Size	Current Rating In (A)	Prearcing Pt @ 1 ms Ptp (A ² s)	Total Pt (A ² s)		Power losses @ In (W)	Tested breaking capacity	Estimated breaking capacity
				@ Un	@ 400V			
690	000	16	45	280	230	2.5		
		20	60	380	310	3		
		25	130	830	700	3.5		
		32	210	1350	1150	4	100 kA	200 kA
		40	350	2200	1900	5	@	@
		50	550	3500	3000	6	690 V	690 V
		63	1000	6100	5150	7		
		80	1700	11000	9200	8		
		100	3900	25000	21000	9		

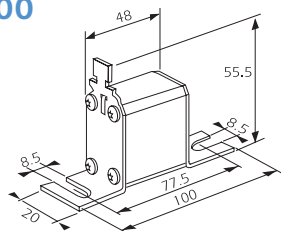
Size 00

Voltage Rating (VAC)	Size	Current Rating In (A)	Prearcing Pt @ 1 ms Ptp (A ² s)	Total Pt (A ² s)		Power losses @ In (W)	Tested breaking capacity	Estimated breaking capacity
				@ Un	@ 400V			
690	00	16	45	280	230	2.5		
		20	60	390	290	3.2		
		25	120	750	560	4		
		32	240	1550	1150	5		
		40	350	2250	1680	5.5		
		50	540	3500	2600	6.5	100 kA	200 kA
		63	1060	6750	5000	7.6	@	@
		80	1900	12100	9000	9.5	690 V	690 V
		100	3900	24150	18000	11		
		125	6950	45000	33500	13		
		160	13500	82000	61000	16		
		200	27600	160000	120000	18		

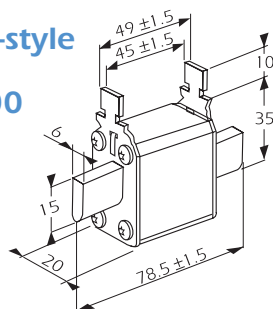
Protistor® Square-body Fuses PSC gGR sizes 000/00 gGR - 690 VAC DIN 00/000 (full range)

Size 000

German standard
DIN 43653/000
DIN 80

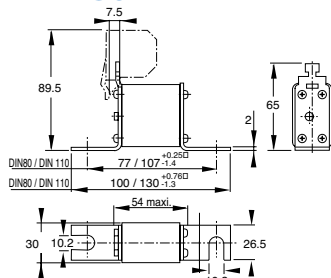


German blade-style
fuse standard
DIN 43620/000

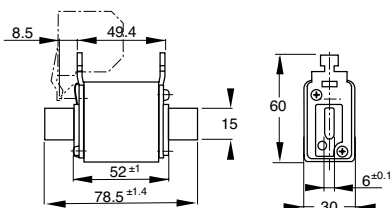


Size 00

German standard
43653/00 - DIN 80



German blade-style
fuse standard 43620/00



No derating:

I/In = I_{rms} of use/fuse rating

In the different holders = no derating

Microswitches:

Ref. F210156: 6.3 mm clips

Ref. G210156: 2.8 mm clips

690 V gGR fuse holders and supports

Type of fuse	Nb. poles	References for mounting on 35 mm DIN rail	References for panel mounting
Solid blades size 000/00 IPXX	1	R216192	F215170
	2	F218758	A217212
	3	V219277	F217723
	4	Z223007	S219275
Solid blades size 000/00 IP20 w/o microswitch	1	S218240	-
	3	S229119	-
	1	-	C220710
DIN 80 bracket size 000 IPXX	1	-	O098040
DIN 80 bracket size 00 IPXX	1	-	-
DIN 80 blades size 000 IP20 w/o microswitch	1	B227218	-
DIN 80 blades size 000 IP20 for microswitch	1	C227219	-
DIN 80 blades size 00 IP20 w/o microswitch	1	V227672	-
DIN 80 blades size 00 IP20 for microswitch	1	W227673	-
DIN 80 blades size 00 IP20 for microswitch ITCP range	1	-	-

Current [A]	Designation	Ref. Number	I/In*	Weight [g]	Pack.	Catalog Number
16	6,9 gGR 000 D08L 016	H302112	1	120	3	DN000GR69V16L
20	6,9 gGR 000 D08L 020	J302113	1	120	3	DN000GR69V20L
25	6,9 gGR 000 D08L 025	K302114	1	120	3	DN000GR69V25L
32	6,9 gGR 000 D08L 032	L302115	1	120	3	DN000GR69V32L
40	6,9 gGR 000 D08L 040	M302116	1	120	3	DN000GR69V40L
50	6,9 gGR 000 D08L 050	N302117	1	120	3	DN000GR69V50L
63	6,9 gGR 000 D08L 063	P302118	1	120	3	DN000GR69V63L
80	6,9 gGR 000 D08L 080	Q302119	1	120	3	DN000GR69V80L
100	6,9 gGR 000 D08L 100	R302120	1	120	3	DN000GR69V100L
Microswitch		F210156				MS4L2-5B6PRES
		G210157				MS4L2-5B2PRES

16	6,9 gGR 000 PV 016	X302102	1	150	3	NH000GR69V16PV
20	6,9 gGR 000 PV 020	Y302103	1	150	3	NH000GR69V20PV
25	6,9 gGR 000 PV 025	Z302104	1	150	3	NH000GR69V25PV
32	6,9 gGR 000 PV 032	A302105	1	150	3	NH000GR69V32PV
40	6,9 gGR 000 PV 040	B302106	1	150	3	NH000GR69V40PV
50	6,9 gGR 000 PV 050	C302107	1	150	3	NH000GR69V50PV
63	6,9 gGR 000 PV 063	D302108	1	150	3	NH000GR69V63PV
80	6,9 gGR 000 PV 080	E302109	1	150	3	NH000GR69V80PV
100	6,9 gGR 000 PV 100	F302110	1	150	3	NH000GR69V100PV
Microswitch		F210156				MS4L2-5B6PRES
		G210157				MS4L2-5B2PRES
Extractor handle		P215592			1	NH HANDLE

20	6,9 gGR 00 D08L 020	T330297	1	140	3	DN00GR69V20L
25	6,9 gGR 00 D08L 025	V330298	1	140	3	DN00GR69V25L
32	6,9 gGR 00 D08L 032	W330299	1	140	3	DN00GR69V32L
40	6,9 gGR 00 D08L 040	X330300	1	140	3	DN00GR69V40L
50	6,9 gGR 00 D08L 050	Y330301	1	140	3	DN00GR69V50L
63	6,9 gGR 00 D08L 063	G330286	1	140	3	DN00GR69V63L
80	6,9 gGR 00 D08L 080	H330287	1	140	3	DN00GR69V80L
100	6,9 gGR 00 D08L 100	J330288	1	140	3	DN00GR69V100L
125	6,9 gGR 00 D08L 125	K330289	1	140	3	DN00GR69V125L
160	6,9 gGR 00 D08L 160	L330290	1	140	3	DN00GR69V160L
200	6,9 gGR 00 D08L 200	M330291	1	140	3	DN00GR69V200L
Microswitch		F210156				MS4L2-5B6PRES
		G210157				MS4L2-5B2PRES

20	6,9 gGR 00 PV 020	N330292	1	210	3	NH00GR69V20PV
25	6,9 gGR 00 PV 025	P330293	1	210	3	NH00GR69V25PV
32	6,9 gGR 00 PV 032	Q330294	1	210	3	NH00GR69V32PV
40	6,9 gGR 00 PV 040	R330295	1	210	3	NH00GR69V40PV
50	6,9 gGR 00 PV 050	S330296	1	210	3	NH00GR69V50PV
63	6,9 gGR 00 PV 063	A330280	1	210	3	NH00GR69V63PV
80	6,9 gGR 00 PV 080	B330281	1	210	3	NH00GR69V80PV
100	6,9 gGR 00 PV 100	C330282	1	210	3	NH00GR69V100PV
125	6,9 gGR 00 PV 125	D330283	1	210	3	NH00GR69V125PV
160	6,9 gGR 00 PV 160	E330284	1	210	3	NH00GR69V160PV
200	6,9 gGR 00 PV 200	F330285	1	210	3	NH00GR69V200PV
Microswitch		F210156 (only)				MS4L2-5B6PRES
Extractor handle		P215592			1	NH HANDLE