

Copper Mechanical Connectors

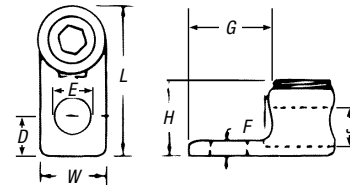
Type L — Single-Conductor, One-Hole Mount

- Cat. Nos. L400 and L650 cast from high-strength bronze alloy
- Cat. Nos. L35, L70, L125 and L250 cold forged from pure electrolytic copper with 99% conductivity



CAT. NO.		CONDUCTOR RANGE		DIMENSIONS (IN.)								
SOCKET	HEX	MAX.	MIN.	L	W	H	F	D	J	E	G	
L35*	—	8 Str.	14 Sol.	1 ¹ / ₁₆	3 ¹ / ₈	3 ¹ / ₈	3 ¹ / ₃₂	1 ³ / ₆₄	1 ¹ / ₆₄	1 ³ / ₆₄	1 ¹ / ₂	
L70*	—	4 Str.	14 Sol.	1 ¹ / ₈	1 ⁷ / ₃₂	3 ⁵ / ₆₄	3 ¹ / ₃₂	9 ¹ / ₃₂	9 ¹ / ₃₂	9 ¹ / ₃₂	2 ¹ / ₃₂	
L125BB	L125H	1/0 Str.	8 Sol.	1 ¹ / ₂	4 ⁷ / ₆₄	3 ¹ / ₄	3 ¹ / ₃₂	3 ¹ / ₈	2 ⁷ / ₆₄	2 ¹ / ₆₄	2 ¹ / ₃₂	
L250	L250H	250 kcmil	6 Str.	1 ⁶ / ₆₄	1 ⁹ / ₁₆	1 ¹ / ₁₆	1 ¹ / ₈	2 ⁹ / ₆₄	5 ¹ / ₈	1 ³ / ₃₂	1 ³ / ₃₂	
L400BB	L400H	500 kcmil	4/0 Str.	3	1 ¹³ / ₃₂	1 ¹³ / ₃₂	9 ¹ / ₃₂	5 ¹ / ₈	7 ¹ / ₈	9 ¹ / ₁₆	1 ¹ / ₈	
L650	L650H	1,000 kcmil	500 kcmil	4	2	2 ¹ / ₁₆	1 ¹ / ₃₂	3 ¹ / ₄	1 ¹ / ₄	9 ¹ / ₁₆	2	

* Sizes L35 and L70 have screwdriver slot head screws only. UL 486A.



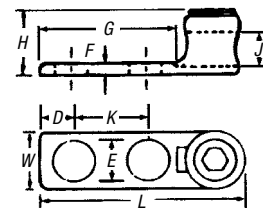
Type L — Single-Conductor, Two-Hole Mount

- For use where large contact area is required to provide more secure mounting
- Cast from high-strength bronze alloy



CAT. NO.		CONDUCTOR RANGE		DIMENSIONS (IN.)									
SOCKET	HEX	MAX.	MIN.	L	W	H	F	D	K	E	G	J	
L1252	L1252H	1/0 Str.	4 Str.	2 ¹³ / ₁₆	2 ⁵ / ₃₂	1 ³ / ₁₆	3 ¹ / ₁₆	7 ¹ / ₁₆	1	1 ¹¹ / ₃₂	2	2 ⁷ / ₆₄	
L2502	L2502H	250 kcmil	1/0 Str.	3	1 ¹ / ₁₆	1 ¹ / ₃₂	1 ⁵ / ₆₄	7 ¹ / ₁₆	1	1 ³ / ₃₂	1 ¹ / ₈	5 ¹ / ₈	
L4002	L4002H	500 kcmil	4/0 Str.	3 ³ / ₈	1 ¹³ / ₃₂	1 ¹³ / ₃₂	5 ¹ / ₁₆	7 ¹ / ₁₆	1	1 ³ / ₃₂	1 ¹⁵ / ₁₆	5 ⁷ / ₆₄	
L6502	L6502H	1000 kcmil	500 kcmil	4 ⁹ / ₁₆	2	2	3 ¹ / ₈	9 ¹ / ₁₆	1 ¹ / ₂	9 ¹ / ₁₆	2 ¹ / ₄	1 ¹ / ₄	

UL 486A



Type TL — Two-Conductor, Two-Hole Mount

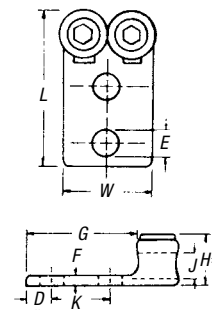
- Conveniently terminates parallel conductors



CAT. NO.		CONDUCTOR RANGE		DIMENSIONS (IN.)									
SOCKET	HEX	MAX.	MIN.	L	W	H	F	D	K	E	G	J	
TL250	TL250H	250 kcmil	1/0 Str.	4 ³ / ₁₆	1 ¹ / ₈	1 ¹ / ₁₆	9 ¹ / ₃₂	1 ³ / ₄	5 ¹ / ₈	9 ¹ / ₁₆	3 ³ / ₁₆	5 ¹ / ₈	
TL400	TL400H	500 kcmil	4/0 Str.	4 ³ / ₄	2 ¹ / ₁₆	1 ⁹ / ₁₆	1 ⁹ / ₃₂	1 ³ / ₄	1 ¹ / ₁₆	9 ¹ / ₁₆	3	7 ¹ / ₈	
TL650	TL650H	1,000 kcmil	500 kcmil	5 ⁹ / ₁₆	3 ¹ / ₄	2 ¹ / ₁₆	9 ¹ / ₁₆	1 ³ / ₄	5 ¹ / ₈	9 ¹ / ₁₆	3 ³ / ₈	1 ¹ / ₄	

Four hole NEMA tang on TL650.

UL 486A.



Type S — Copper End-to-End Splice Connector

- Cast of high-strength copper alloy
- Plated steel socket head set screws



CAT. NO.		CONDUCTOR RANGE		DIMENSIONS (IN.)				
MAX.	MIN.	L	W	H	J	I		
S100BB	1 Str.	4 Sol.	1 ¹ / ₁₆	5 ¹ / ₈	1 ¹ / ₁₆	3 ¹ / ₈	1 ¹ / ₁₆	
S225BB*	4/0 Str.	1 Str.	2 ¹ / ₁₆	2 ⁷ / ₃₂	3 ¹ / ₃₂	9 ¹ / ₁₆	1 ¹ / ₁₆	
S400BB	500 kcmil	4/0 Str.	2 ¹ / ₈	1 ³ / ₁₆	1 ¹ / ₁₆	7 ¹ / ₈	1 ¹ / ₈	

* Not UL Listed.

