

Hospital Products

Hospital Grade Molded-on Power Supply Cords



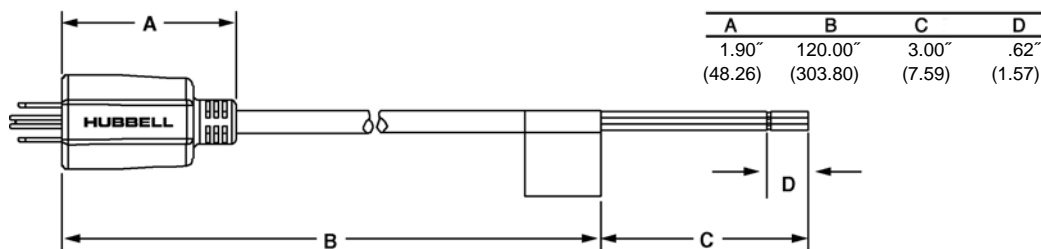
HBL16GYGY



Catalog Numbers	Rating	AWG Size	Jacket Color	Plug Color	Length	Temp. Rating
HBL16BKBK	13A, 125V	16/3 SJTOW	Black	Black	10'	0°C min. to 105°C.
HBL16BKBKB ♦	13A, 125V	16/3 SJTOW	Black	Black	10'	0°C min. to 105°C.
HBL16BKCL	13A, 125V	16/3 SJTOW	Black	Clear	10'	0°C min. to 105°C.
HBL16BKCLB ♦	13A, 125V	16/3 SJTOW	Black	Clear	10'	0°C min. to 105°C.
HBL18BKBK	10A, 125V	18/3 SJTOW	Black	Black	10'	0°C min. to 105°C.
HBL18BKBKB ♦	10A, 125V	18/3 SJTOW	Black	Black	10'	0°C min. to 105°C.
HBL18BKCL	10A, 125V	18/3 SJTOW	Black	Clear	10'	0°C min. to 105°C.
HBL18BKCLB ♦	10A, 125V	18/3 SJTOW	Black	Clear	10'	0°C min. to 105°C.
HBL16GYGY	13A, 125V	16/3 SJTOW	Gray	Gray	10'	0°C min. to 105°C.
HBL16GYGYB ♦	13A, 125V	16/3 SJTOW	Gray	Gray	10'	0°C min. to 105°C.
HBL16GYCL	13A, 125V	16/3 SJTOW	Gray	Clear	10'	0°C min. to 105°C.
HBL16GYCLB ♦	13A, 125V	16/3 SJTOW	Gray	Clear	10'	0°C min. to 105°C.
HBL18GYGY	10A, 125V	18/3 SJTOW	Gray	Gray	10'	0°C min. to 105°C.
HBL18GYGYB ♦	10A, 125V	18/3 SJTOW	Gray	Gray	10'	0°C min. to 105°C.
HBL18GYCL	10A, 125V	18/3 SJTOW	Gray	Clear	10'	0°C min. to 105°C.
HBL18GYCLB ♦	10A, 125V	18/3 SJTOW	Gray	Clear	10'	0°C min. to 105°C.

Note: ♦ Bulk packed 50 per carton.

Dimensions (in/mm)



Specification Data

Mechanical

Terminal Identification	Per UL817: black, white & green conductor insulation.
Conductor Size	#18 or #16 copper conductors only.
Product Identification	On single packed items, ratings are located on flag label. On bulk pack items, "For OEM use only" printed on carton.

Electrical

Dielectric Voltage	Withstands 2000V AC minimum.
Max. Working Voltage	125V AC.
Temperature Rise	Max 86°, (30°C) @ full rated current after 50 cycles overload.

Environmental - Material

Flammability	UL 94HB.
Operating Temperatures	0°C to 105°C.

Materials

Housing	PVC; gray, clear or black
Blades	.060" nickel plated brass
Cable	Black or gray; 16 AWG & 18 AWG SJTOW

Standards

NEMA Configuration	5-15P.
Listed to UL Standard	UL817: Cordsets and Power Supply Cords.
Certified to CSA Standard	CSA 22.2 No. 21: Cordsets and Power Supply Cords.

Typical Specifications

Manufacturer's Identification	Hubbell HBL16BKBK.
Description	Hospital Grade Molded-On Power Supply Cord.
Electrical Type	2 Pole 3 Wire grounding.
Rating	13A 125V.
Certification	UL Listed, CSA Certified.

Hospital Products

Technical Information



HBL8200GY

Hospital Grade, Straight Blade Duplex Receptacle

Specifications

Receptacle	Part	Description
Typical Specification—Catalog No. HBL8200.	Receptacle	15A
Manufacturer's Identification—Hubbell HBL8200 Receptacle.	Top	Thermoplastic Polyester
Description—Hospital Grade Straight Blade Duplex Receptacle.	Base	RTP*
Type—2 Pole, 3 Wire Grounding.	Bypass Power Contacts	.04" (1.0) Brass – Ni Plated
Rating—15A, 125V.	Clamping Plate	.03" (.8) Brass – Ni Plated
Certification: UL Listed.	Mounting Strap	.05" (1.3) Brass – Ni Plated
Fed Spec WC596, Hospital Grade, Meets	Terminal Screws	#10 Silicon Bronze
NEMA WD-1 and WD-6 Requirements	Grounding Screw	(Green) Silicon Bronze
Listed to UL Standard 498,	Center Assembly Rivet	Silicon Bronze
Certified to CSA, C22.2, No. 42	Auto. Grd. Clip	Stainless Steel
where applicable.	Flat Hd. Mtg. Screws	Stainless Steel

Performance

Electrical

Dielectric Voltage	Withstands 2000V AC minimum.
Max. Working Voltage	125V or 250V as rated.
Current Interrupting	Certified for current interrupting at full rated current.
Temperature Rise	Max 30°C temperature rise at full rated current after 100 cycles of overload at 150% of rated voltage DC.

Mechanical

Terminal Identification	Terminals identified in accordance with UL 498 (Brass, White, Green).
Terminal Accommodation	#14–#10 AWG stranded or solid copper conductor only.
Product Identification	Ratings are a permanent part of the device.

Environmental - Material

Flammability	UL 94V-0 and UL 94-5 VA.
Operating Temperatures	Maximum continuous 75°C, minimum -40°C (w/o impact).

*Reinforced Thermoplastic Polyester

Ni = Nickel