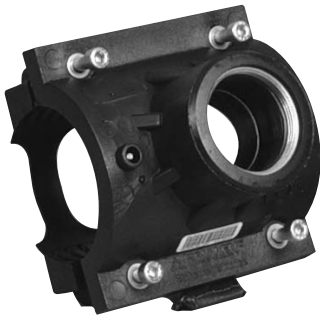


SADDLES

VA Electrofusion Service Saddles



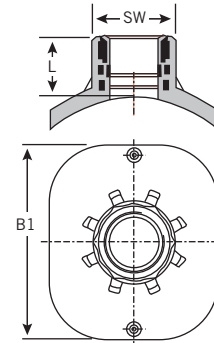
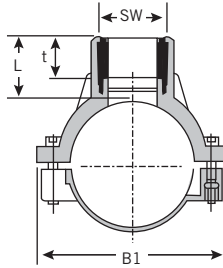
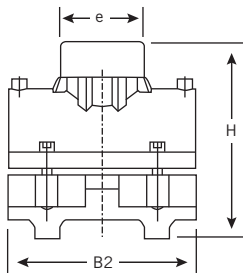
Field of Application Installation of service and branch pipes to PE pipes 2406/2708 and 3408/4710

Range of Application Gas up to 125 psi and water up to 200 psi

FRIALEN Molded Saddle Fittings may be clamped onto pipes up to SDR 11 and sealed using electrofusion. In addition to house connection fittings, FRIATEC Molded Saddle Fittings can also be used as branch saddles for polyethylene relining pipes (U-liners, C-liners, Roll-down)

Benefits include:

- universal compatibility with various diameters of polyethylene pipe from 3" up to 22" IPS
- quick, easy and safe assembly
- NSF-61



Nominal Pipe d1 (in)	Main Size d2	Nominal Outlet	Product Code	B1	B2	H	L	t	e
3"	IPS	2" SSPT	228262	6.102	5.906	7.835	3.740	1.063	3.189
4"	IPS	2" SSPT	228170	6.890	7.087	8.228	3.740	1.063	3.189
4"	DIP	2" SSPT	228298	6.890	7.087	8.228	3.740	1.063	3.189
6"	IPS	2" SSPT	228171	8.858	7.677	10.197	3.740	1.063	3.189
6"	DIP	2" SSPT	228302	8.858	7.677	10.197	3.740	1.063	3.189
8" - TL*	IPS	2" SSPT	228218	9.843	7.677	11.693	3.740	1.063	3.189
8" - TL*	DIP	2" SSPT	228173	10.039	7.677	12.283	3.740	1.063	3.189
10" - 22" TL*	IPS	2" SSPT	228174	7.874	--	--	3.543	--	--
10" - 20" TL*	DIP	2" SSPT	228174	7.874	--	--	3.543	--	--

* FRIATEC Pneumatic Top-loading tool required

FRIATEC Safety fittings can be fused to all PE pipes SDR range 11 through 17.6.

Assemble nipple, bushing or corporation stop into saddle using red LOCTITE #262

(SSPT) = Straight Standard Pipe Thread. The use of tapered fittings for the outlet is not permitted