

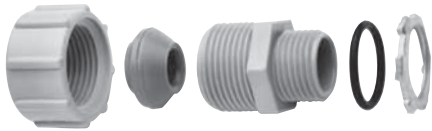
CONDUIT FITTINGS

Size inches	Part Number	Product Code
-------------	-------------	--------------

Nonmetallic Threaded Strain Relief Connectors




c/w "O" Ring, Locknut & 6 Grommets

1/2	TSRC10	077754
3/4	TSRC15	077756



From inches	To inches
-------------	-----------

Strain Relief Connectors Grommet Dimensions

	W = .195 L = .450	W = .285 L = .530
	W = .220 L = .516	W = .291 L = .565
	Ø = .240	Ø = .300"




Size inches	Part Number	Product Code
-------------	-------------	--------------

Strain Relief Connectors c/w 6 Grommets



3/4	SRC15	077985
-----	-------	--------

From inches	To inches
-------------	-----------

	Ø = .290	Ø = .385
	Ø = .405	Ø = .500
	Ø = .525	Ø = .625

CEMENTS AND PRIMERS

Size	Part Number	Product Code
------	-------------	--------------

Conduit Cement c/w Applicator Cap



125ml	S100PT25	074717
250ml	S100PT5	074713
500ml	S100PT	074714
1L	S100QT	074715
4L	S100GAL	074716

Size	Part Number	Product Code
------	-------------	--------------

Primer



250ml	C100PT5	074306
500ml	C100PT	074307
1L	C100QT	074308

AVERAGE # OF JOINTS PER PINT OR QUART OF CEMENT

Nominal Pipe Size inches	Nominal Pipe Size mm	# of Joints per Pint	# of Joints per Quart	Nominal Pipe Size inches	Nominal Pipe Size mm	# of Joints per Pint	# of Joints per Quart
1/2	12	350	700	2-1/2	12	40	80
3/4	19	200	400	3	19	35	70
1	25	150	300	3-1/2	25	30	60
1-1/4	32	110	220	4	32	24	48
1-1/2	38	80	160	5	38	10	20
2	50	45	90	6	50	8	16