



FEATURED PRODUCTS

Pre-Terminated Trunk Cables **B51**

Harnesses **B55**

Array Cords **B58**

Premium & Economy Fiber Optic Cable Assemblies **B59**

Pre-Terminated Cable Assemblies

Simplify fiber connection and termination with Leviton cable assemblies.

Choose from a wide selection of patch cords, and take advantage of our Secure Keyed LC and Opt-X® Unity 40/100G assemblies to protect and future-proof your critical networks. Pre-terminated trunk cables and harnesses, plus multimode, single-mode, and pigtail assemblies are all made to customer specifications.

Choose cable type, connector combinations, length, mode, and more.

Configure online at [Leviton.com/configurator](https://leviton.com/configurator).

PRE-TERMINATED CABLE ASSEMBLIES | Pre-Term. Trunk Cables > Opt-X® Unity 40/100G



OPT-X UNITY 40/100G PRE-TERMINATED TRUNK CABLES

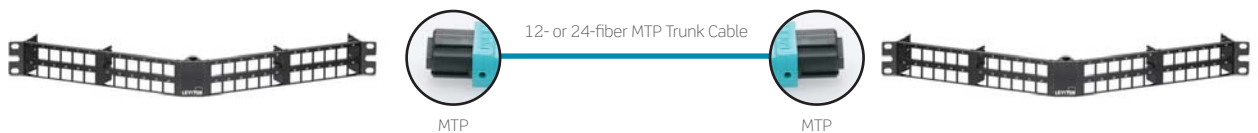
- MTP-to-MTP trunk cables support 40/100G speeds
- Terminations available in 8-, 12-, and 24-fiber configurations
- Migration solution to 40/100G from existing 10G networks with premium 12-fiber MTP trunk configuration
- Up to 70% faster install than field-terminated trunks
- MTP polarity options are TIA methods A, B, or C (Method B is standard)
- 100 percent factory tested, with test results included for each assembly
- All assemblies labeled with serial number and length for traceability and easy re-order



See page B8 for Opt-X Unity 40/100G system overview.

CONNECTOR MATED PAIRS	MULTIMODE						SINGLE-MODE		
	DUPLEX TYPICAL IL	DUPLEX MAX IL	12-FIBER STANDARD TYPICAL IL	12-FIBER STANDARD MAX IL	8- & 12-FIBER ULL	24-FIBER PREMIUM MAX IL	STANDARD TYPICAL IL	STANDARD MAX IL	12- & 24-FIBER PREMIUM MAX IL
LC	0.15	0.25	—	—	—	—	0.25	0.35	—
MTP	—	—	0.30	0.35	0.20	0.35	—	0.75	0.35

SPOTLIGHT Migration Path to 40G & 100G



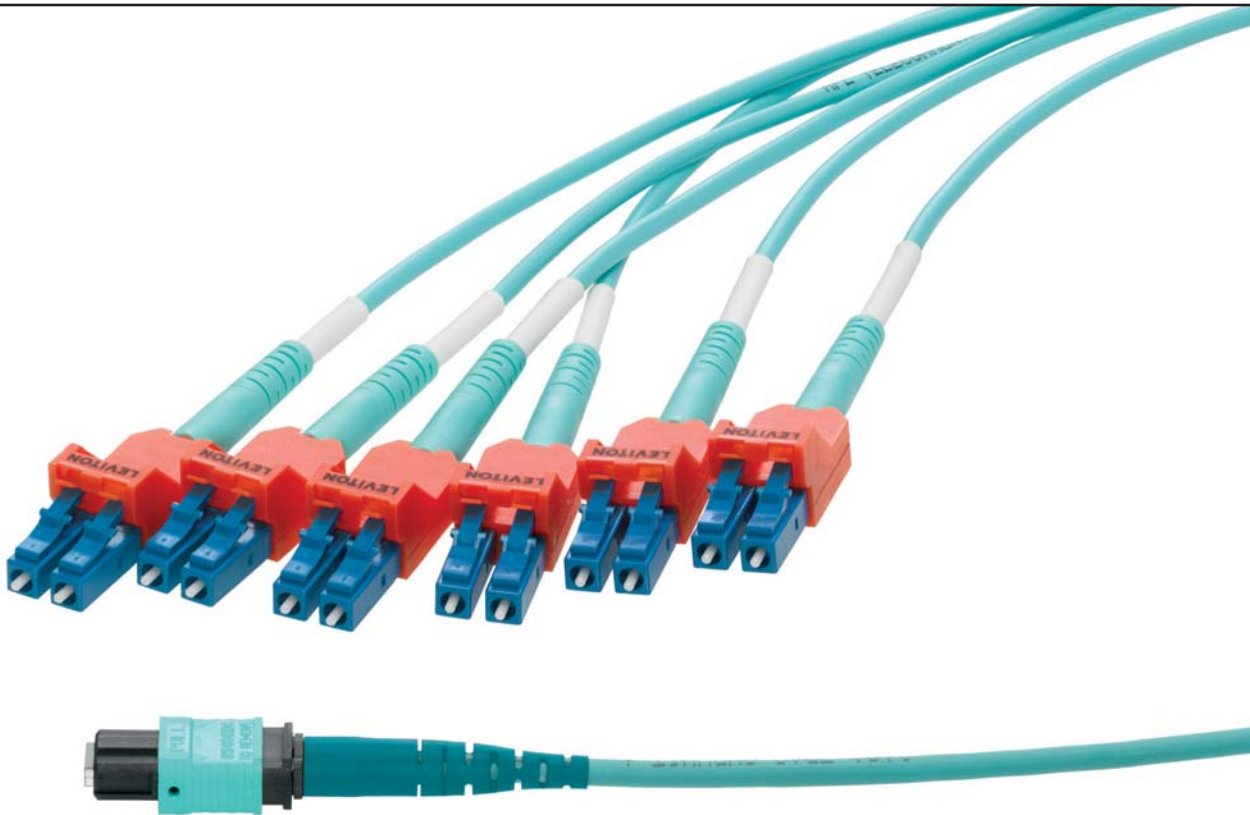
Leviton pre-terminated MTP solutions offer an ideal migration path from 10G to 40G and 100G channels. The Opt-X Unity 40/100G system features MTP trunks, harnesses, array cords, adapter plates, and cassettes to help future-proof your networks. The Opt-X Unity system is fully compatible with UHD, HD, SD, and e2XHD (shown) footprints.



10G
Leviton components for a 10G channel include MTP-LC SDX, e2XHD, or HDX cassettes, and LC duplex patch cords.

40G
Migration from 10G to a 40G system replaces LC with MTP components, such as 2x12-fiber to 3x8-fiber MTP cassettes and 8-fiber MTP array cords.

100G
Moving from 40G to 100G replaces MTP cassettes with MTP adapter plates and uses 24-fiber MTP array cords.



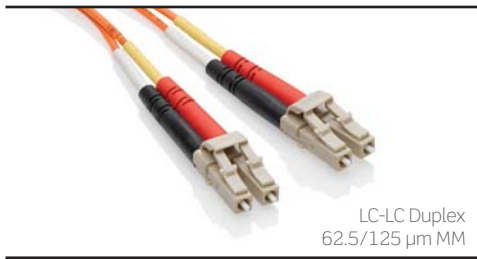
Secure Keyed MTP®-LC Harness

SECURE KEYED LC HARNESSES

- Locking design prevents unauthorized and inadvertent moves, adds, and changes
- Duplex LC connectors can only be removed with matching-color extraction tool
- Choose from eight colors to segregate and secure networks
- Duplex LC connectors plug into any industry-compliant LC adapter or interface
- Polarity is A to A
- Harnesses are part of the Leviton Make-to-Order (MTO) program

SECURE KEYED LC MTP-LC HARNESS OPTIONS					
KEYED COLOR	FIBER TYPE	FIBER COUNT	TERMINATION	CABLE LENGTH (FEET)	1ST & 2ND BREAKOUT (INCHES)
• White	• OS2	• 12	FIRST END	• 3	• 0-48
• Yellow	• OM2	• 24	• MTP (female) (standard)	• 5	
• Orange	• OM1		• MTP (male)	• 6	
• Red	• OM3		SECOND END	• 8	
• Blue	• OM4 (Aqua)		• Secure Keyed LC Duplex (uni-body)	• Other	
• Green	• OM4+ (Violet)				
• Slate					
• Black					

For assistance customizing your harnesses, please call Tech Support at (800) 824 3005.



ECONOMY MULTIMODE PATCH CORDS

- Riser rated is standard, LSZH is optional
- < 0.3 dB insertion loss maximum, > 25 dB return loss
- 100 percent factory tested
- OM1, OM2, OM3, and OM4
- All cables are pre-labeled and individually bagged
- Stock available for lengths listed

62.5/125 μM MULTIMODE (OM1) OFNR DUPLEX

DESCRIPTION	LENGTH (METERS)	DUPLEX
LC-LC	1	62DLC-M01
LC-LC	2	62DLC-M02
LC-LC	3	62DLC-M03
LC-LC	5	62DLC-M05
LC-LC	10	62DLC-M10
SC-LC	1	62DCL-M01
SC-LC	2	62DCL-M02
SC-LC	3	62DCL-M03
SC-LC	5	62DCL-M05
SC-LC	10	62DCL-M10
SC-SC	1	62DSC-M01
SC-SC	2	62DSC-M02
SC-SC	3	62DSC-M03
SC-SC	5	62DSC-M05
SC-SC	10	62DSC-M10
SC-ST	1	62DCT-M01
SC-ST	2	62DCT-M02
SC-ST	3	62DCT-M03
SC-ST	5	62DCT-M05
SC-ST	10	62DCT-M10
ST-ST	1	62DST-M01
ST-ST	2	62DST-M02
ST-ST	3	62DST-M03
ST-ST*	5	62DST-M05
ST-ST	10	62DST-M10

* = Lead times may apply.

50/125 μM MULTIMODE (OM2) OFNR DUPLEX

DESCRIPTION	LENGTH (METERS)	DUPLEX
LC-LC	1	50DLC-M01
LC-LC	2	50DLC-M02
LC-LC	3	50DLC-M03
LC-LC	5	50DLC-M05
LC-LC	10	50DLC-M10
SC-LC	1	50DCL-M01
SC-LC	2	50DCL-M02
SC-LC	3	50DCL-M03
SC-LC	5	50DCL-M05
SC-LC	10	50DCL-M10
SC-SC	1	50DSC-M01
SC-SC	2	50DSC-M02
SC-SC	3	50DSC-M03
SC-SC	5	50DSC-M05
SC-SC	10	50DSC-M10
ST-ST	1	50DST-M01
ST-ST	2	50DST-M02
ST-ST	3	50DST-M03
ST-ST	5	50DST-M05
ST-ST*	10	50DST-M10

50/125 μM LOMM (OM3) OFNR DUPLEX

LC-LC	1	5LDLC-M01
LC-LC	2	5LDLC-M02
LC-LC	3	5LDLC-M03
LC-LC	5	5LDLC-M05
LC-LC	10	5LDLC-M10
SC-LC	1	5LDCL-M01
SC-LC	2	5LDCL-M02
SC-LC	3	5LDCL-M03
SC-LC	5	5LDCL-M05
SC-LC	10	5LDCL-M10
SC-SC	1	5LDSC-M01
SC-SC	2	5LDSC-M02
SC-SC	3	5LDSC-M03
SC-SC	5	5LDSC-M05
SC-SC	10	5LDSC-M10

50/125 μM LOMM (OM4) OFNR DUPLEX

LC-LC*	1	54DLC-M01
LC-LC*	3	54DLC-M03
LC-LC*	5	54DLC-M05
LC-LC*	10	54DLC-M10
SC-LC*	1	54DCL-M01
SC-LC*	3	54DCL-M03
SC-LC*	5	54DCL-M05
SC-LC*	10	54DCL-M10