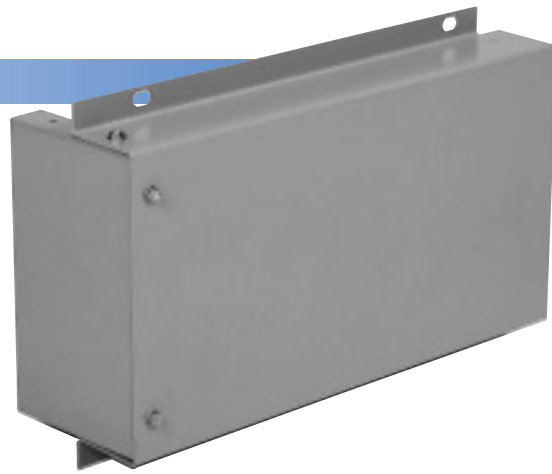


# End Closures



## Ordering Information

Amp Rating	Catalog Number	Housing Size	Busbar Size
<b>Aluminum 3 Phase - 3 Wire</b>			
225A	ECP6	4 <sup>1</sup> / <sub>16</sub> x 8 <sup>7</sup> / <sub>8</sub>	(1) ¼ x 1
400A	ECP6	4 <sup>1</sup> / <sub>16</sub> x 8 <sup>7</sup> / <sub>8</sub>	(1) ¼ x 2
600A	ECP10	6 <sup>1</sup> / <sub>16</sub> x 8 <sup>7</sup> / <sub>8</sub>	(1) ¼ x 3
800A	ECP10	6 <sup>1</sup> / <sub>16</sub> x 8 <sup>7</sup> / <sub>8</sub>	(1) ¼ x 4
1000A	ECP10	12 <sup>1</sup> / <sub>8</sub> x 8 <sup>7</sup> / <sub>8</sub>	(2) ¼ x 3
1200A	ECP10	12 <sup>1</sup> / <sub>8</sub> x 8 <sup>7</sup> / <sub>8</sub>	(2) ¼ x 4

<b>Aluminum 3 Phase - 4 Wire, 100% Neutral</b>			
225A	ECP6	4 <sup>1</sup> / <sub>16</sub> x 8 <sup>7</sup> / <sub>8</sub>	(1) ¼ x 1
400A	ECP6	4 <sup>1</sup> / <sub>16</sub> x 8 <sup>7</sup> / <sub>8</sub>	(1) ¼ x 2
600A	ECP10	6 <sup>1</sup> / <sub>16</sub> x 8 <sup>7</sup> / <sub>8</sub>	(1) ¼ x 3
800A	ECP10	8 <sup>7</sup> / <sub>8</sub> x 8 <sup>7</sup> / <sub>8</sub>	(1) ¼ x 4
1000A	ECP10	12 <sup>1</sup> / <sub>8</sub> x 8 <sup>7</sup> / <sub>8</sub>	(2) ¼ x 3
1200A	ECP10	12 <sup>1</sup> / <sub>8</sub> x 8 <sup>7</sup> / <sub>8</sub>	(2) ¼ x 4

<b>Copper 3 Phase - 3 Wire</b>			
225A	ECP6	4 <sup>1</sup> / <sub>16</sub> x 8 <sup>7</sup> / <sub>8</sub>	(1) 3/64 x 2
400A	ECP6	4 <sup>1</sup> / <sub>16</sub> x 8 <sup>7</sup> / <sub>8</sub>	(1) ¼ x 1½
600A	ECP6	4 <sup>1</sup> / <sub>16</sub> x 8 <sup>7</sup> / <sub>8</sub>	(1) ¼ x 2
800A	ECP10	6 <sup>1</sup> / <sub>16</sub> x 8 <sup>7</sup> / <sub>8</sub>	(1) ¼ x 3
1000A	ECP10	6 <sup>1</sup> / <sub>16</sub> x 8 <sup>7</sup> / <sub>8</sub>	(1) ¼ x 4
1350A	ECP10	12 <sup>1</sup> / <sub>8</sub> x 8 <sup>7</sup> / <sub>8</sub>	(2) ¼ x 3
1600A	ECP10	12 <sup>1</sup> / <sub>8</sub> x 8 <sup>7</sup> / <sub>8</sub>	(2) ¼ x 4

<b>Copper 3 Phase - 4 Wire, 100% Neutral</b>			
225A	ECP6	4 <sup>1</sup> / <sub>16</sub> x 8 <sup>7</sup> / <sub>8</sub>	(1) 3/64 x 2
400A	ECP6	4 <sup>1</sup> / <sub>16</sub> x 8 <sup>7</sup> / <sub>8</sub>	(1) ¼ x 1½
600A	ECP6	4 <sup>1</sup> / <sub>16</sub> x 8 <sup>7</sup> / <sub>8</sub>	(1) ¼ x 2
800A	ECP10	8 <sup>7</sup> / <sub>8</sub> x 8 <sup>7</sup> / <sub>8</sub>	(1) ¼ x 3
1000A	ECP10	8 <sup>7</sup> / <sub>8</sub> x 8 <sup>7</sup> / <sub>8</sub>	(1) ¼ x 4

BD Busway end closures are used at the end of a busway system to close off the run of busway. It can be removed to allow for future connection of additional busway when your power distribution requirements need to be expanded.

