

Sentron Molded Case Circuit Breakers

External Accessories

Selection

Handle Ties with Padlock Device

Provide simultaneous switching of 2 or 3 adjacent handles.
Do not provide common trip.

For Use With Breaker Frame(s)	Catalog Number	Standard Package	Wt Lb/ Std Pkg
BQD, NGB, HGB, LGB	BQDHT2	10	½
	BQDHT3	10	½

Padlocking Devices

For locking breaker in "OFF" position.

Breaker Type	Catalog Number	Standard Package	Wt Lb/ Std Pkg
All QJ	HL9419	10	¼
All BQD, CQD, NGB, HGB, LGB	BQDPLD	1	⅙
NGG, HGG, LGG	HPLG	1	¼
EB, 1- thru 3-pole	HPLEB	1	⅙
EG, 3- and 4-pole only	HPLE	1	¼
All ED	ED2HPL	1	¼
All FD	FD6PL1	1	¼
All JD, LD, LMD	JD6HPL	1	¼
All MD, ND, PD, RD	MN6PLD	1	¼

Handle Blocking Devices

For holding breaker in "ON" or "OFF" position.
Not a lockout/tagout device.

Breaker Type	Catalog Number	Standard Package	Wt Lb/ Std Pkg
All QJ	QJHS1 ^①	25	1
All BQD, CQD, GG, GB	BQDHBD	1	¼
EG	HBDE	1	¼
All ED	E2HBL	1	¼
All FD	FD6HB1	1	½
All JD, LD, LMD	JD6HBL	1	½
All MD, ND, PD, RD	MN6BL	1	½

Handle Extensions

For replacement. One extension shipped with breaker.

Breaker Type	Catalog Number	Standard Package	Wt Lb/ Std Pkg
All MD, ND, PD, RD	EX11	1	2

Terminal Shields

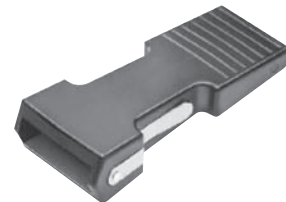
Breaker Type	Poles	Catalog Number	Standard Package
NGG, HGG, LGG	3	TSSG3A	1



FD Padlocking Device
FD6PL1



FD Handle Blocking Device
FD6HB1



Handle Extension
EX11

■ Built to order. Allow 2-3 weeks for delivery.

① Sold only in standard package quantities.