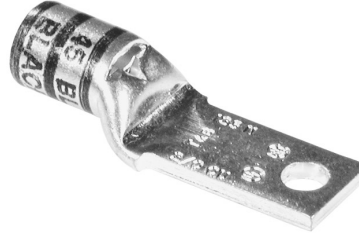


# Color-Keyed®

## Connectors for Copper Conductor

### Narrow Tongue Lugs - Standard Barrel 600V Applications

Material: High Conductivity Wrought Copper  
Finish: Electro Tin Plate



Cat. No.	Wire Size		Bolt Hole	Fig. #	Dimensions (in.)							Die Code	Die Color
	Code	Flex			A	B	C	D	E	F	G		
55112	#4 AWG	91/24 = 36.7 kcmil	1/4	1	1.38	.56	.50	.09	.37	1/4		29	GREY
55116	#2 AWG	125/24 = 50.4 kcmil	1/4	1	1.50	.56	.50	.09	.41	1/4		33	BROWN
55122	#1 AWG	150/24 = 60.5 kcmil, 175/24 = 70.6 kcmil, #2 Weld	1/4	1	1.88	.94	.55	.11	.47	1/4		37	GREEN
55130	1/0 AWG	225/24 = 90.8 kcmil	1/4	1	1.88	.94	.64	.13	.52	1/4		42	PIN
55136	2/0 AWG	275/24 = 111 kcmil, 1/0 Weld	1/4	1	2.25	1.14	.64	.13	.57	1/4		45	BLACK
55142	3/0 AWG	325/24 = 131 kcmil, 2/0 Weld	1/4	1	2.37	1.14	.78	.13	.63	1/4		50	ORANGE
55148	4/0 AWG	450/24 = 182 kcmil	1/4	1	2.45	1.14	.78	.14	.70	1/4		54	PURPLE
55156	250 kcmil	550/24 = 222 kcmil, 4/0 Weld	1/4	1	2.85	1.14	.98	.14	.77	1/4		62	YELLOW
55162	300 kcmil		1/4	1	2.71	1.20	.98	.19	.85	5/16		66	WHITE
55165	350 kcmil		1/2	1	3.13	1.39	1.09	.18	.93	1/2		71	RED
256-30695-1340	350 kcmil		3/8	1	3.10	1.27	.98	.18	.93	1/2		71	RED
55171	500 kcmil	925/24 = 373 kcmil	1/2	1	3.58	1.39	1.20	.22	1.10	1/2		87	BROWN
54879NT	750 kcmil		3/8	2	5.00	2.02	1.66	.27	1.33	1/2	1	106	BLACK
256-30695-1266	750 kcmil	1325/24 = 535 kcmil	1/2	1	3.71	1.58	1.49	.27	1.33	3/4		106	BLACK
55178	750 kcmil		3/8	1	3.71	1.70	1.49	.27	1.33	3/4		106	BLACK
58825NT	900 kcmil		3/8	2	5.00	2.13	1.66	.31	1.50	1/2	1	115	YELLOW
58825NT0828	900 kcmil	1925/24 = 777 kcmil	1/2	2	5.75	2.88	1.66	.31	1.50	1/2	1 3/4	115	YELLOW

Tooling: Pg. 79-100  
Die Selector Chart: Pg. 105-109

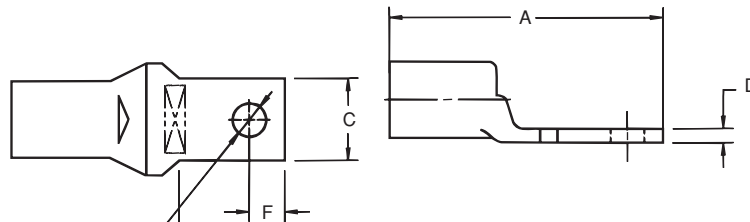


Figure 1

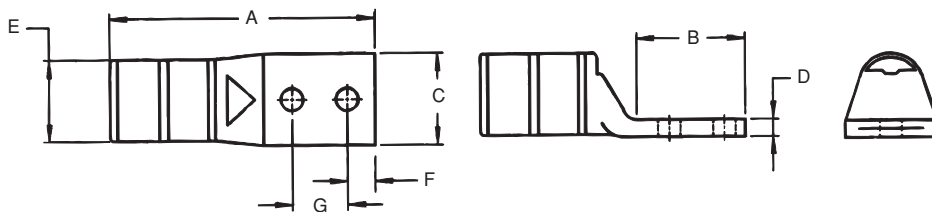


Figure 2