

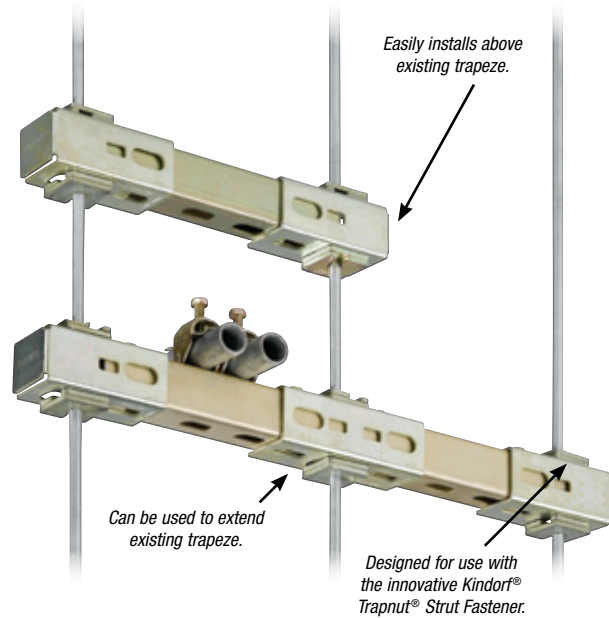
Hardware and Threaded Components

Handle Retrofit Trapeze Applications with Ease!

Trap-Eze™ Connector

The innovative Kindorf® Trap-Eze™ Connector changes a time-consuming retrofit trapeze application into a streamlined process. Using a Kindorf® Trapnut® Strut Fastener, the new Trap-Eze™ Connector can be easily installed above or to the side of an existing assembly, eliminating the need to disassemble and reassemble the trapeze. It is designed for use with shorter strut lengths that can vary in length by as much as an inch, so the strut can be rough cut versus labor-intense precision cuts.

- Easily installs above or to the side of an existing assembly, eliminating the need to disassemble and reassemble the trapeze
- Connectors can be reused upon disassembly of a trapeze
- Designed for either 3/8" and 1/2" threaded rod
- Designed for use with the innovative Kindorf® Trapnut® Strut Fastener, which can take up to 43% less time than standard nuts and washers on retrofit trapeze applications
- View window provides safety zone for strut length



View window provides strut length safety zone for rough cuts versus precision cuts.



Unique safety slot maintains bracket position on threaded rod and prevents disengagement of the trapeze system.

CAT. NO.	DESCRIPTION	STD. CTN.
For 1½" Kindorf® Channels		
B998	Trap-Eze™ End Connector Gold-Galv	20
B999	Trap-Eze™ Mid Connector Gold-Galv	10
B998EG	Trap-Eze™ End Connector EG	20
B999EG	Trap-Eze™ Mid Connector EG	10
For 1½" Strut Channels		
AB221	Trap-Eze™ End Connector Gold-Galv	20
AB222	Trap-Eze™ Mid Connector Gold-Galv	10
AB221EG	Trap-Eze™ End Connector EG	20
AB222EG	Trap-Eze™ Mid Connector EG	10

Trapnut® Strut Fastener



CAT. NO.	DESCRIPTION	SIZE (IN.)	DESIGN	
			LOAD LBS.	STD. CTN.
H 122 1/4	¼" Galv-Krom®	¼	150	50
H 122 3/8	⅜" Galv-Krom®	⅜	590	50
H 122 1/2	½" Galv-Krom®	½	1,080	50
H 122 1/4 EG	¼" SilverGalv®	¼	150	50
H 122 3/8 EG	⅜" SilverGalv®	⅜	590	50
H 122 1/2 EG	½" SilverGalv®	½	1,080	50
H 122 1/4 SS6	¼" Type 316 Stainless Steel	¼	150	50
H 122 3/8 SS6	⅜" Type 316 Stainless Steel	⅜	590	50
H 122 1/2 SS6	½" Type 316 Stainless Steel	½	1,080	50

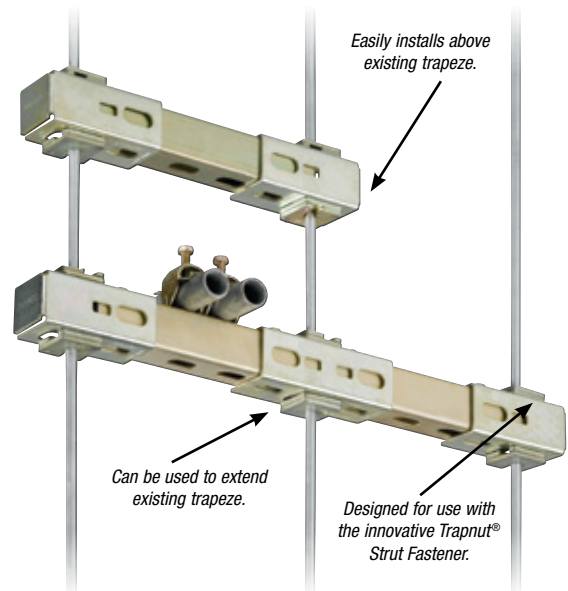
Threaded Products and Hardware

Handle Retrofit Trapeze Applications with Ease!

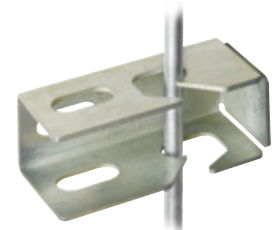
Trap-Eze™ Connector

The innovative Trap-Eze™ Connector changes a time-consuming retrofit trapeze application into a streamlined process. Using a Trapnut® Strut Fastener, the new Trap-Eze™ Connector can be easily installed above or to the side of an existing assembly, eliminating the need to disassemble and reassemble the trapeze. It is designed for use with shorter strut lengths that can vary in length by as much as an inch, so the strut can be rough cut versus labor-intense precision cuts.

- Easily installs above or to the side of an existing assembly, eliminating the need to disassemble and reassemble the trapeze
- Connectors can be reused upon disassembly of a trapeze
- Designed for either 3/8" and 1/2" threaded rod
- Designed for use with the innovative Trapnut® Strut Fastener, which can take up to 43% less time than standard nuts and washers on retrofit trapeze applications
- View window provides safety zone for strut length



View window provides strut length safety zone for rough cuts versus precision cuts.



Unique safety slot maintains bracket position on threaded rod and prevents disengagement of the trapeze system.

CAT. NO.	DESCRIPTION	STD. CTN.
For Superstrut® or other 1 1/4" Strut		
AB221	Trap-Eze™ End Connector GoldGalv®	20
AB222	Trap-Eze™ Mid Connector GoldGalv®	10
AB221EG	Trap-Eze™ End Connector SilverGalv®	20
AB222EG	Trap-Eze™ Mid Connector SilverGalv®	10
For 1 1/2" Kindorf Channels		
B998	Trap-Eze™ End Connector Galv-Krom®	20
B999	Trap-Eze™ Mid Connector Galv-Krom®	10
B998EG	Trap-Eze™ End Connector SilverGalv®	20
B999EG	Trap-Eze™ Mid Connector SilverGalv®	10

Square Washer



AB-241

CAT. NO.	BOLT SIZE (IN.)	STD. CTN.
AB-241-1/4	1/4	100
AB-241-5/16	5/16	100
AB-241-3/8	3/8	100
AB-241-1/2	1/2	100
AB-241-5/8	5/8	100
AB-241-3/4	3/4	50

Located Square Washer



AB-241L

CAT. NO.	BOLT SIZE (IN.)	STD. CTN.
AB-241L-1/4	1/4	100
AB-241L-5/16	5/16	100
AB-241L-3/8	3/8	100
AB-241L-1/2	1/2	100
AB-241L-5/8	5/8	100