

Compression Connectors

Specially designed for industrial and building applications.

Type CTL — Copper One-Hole Lugs, Short Barrel

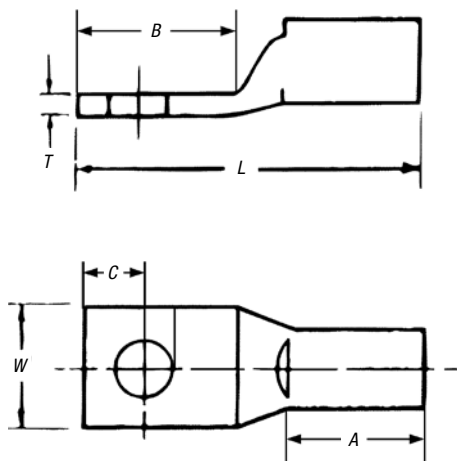


Copper Compression Connectors

- For use with copper conductor: AWG stranded, flexible cable, welding cable and portable cord
- Specially designed for industrial and building applications
- Made of high-conductivity seamless copper tubing
- Tin plated for corrosion resistance
- Specially chamfered barrel for ease of installation
- Color coded for matching die identification
- Can be used for high-voltage application up to 35kV provided proper high-voltage insulation techniques are used
- UL® Listed for AWG conductor when installed with Blackburn®, Burndy®, T&B® or Anderson tools
- Comply with Subpart 111.60-17 of Federal Register's Coast Guard Electrical Engineering Rules and Regulations

Short-Barrel Connectors

- Designed for regular-duty applications
- Ideal for confined areas



CAT. NO.	CONDUCTOR SIZE (CU)	STUD SIZE	DIMENSIONS (IN.)						DIE COLOR CODE	
			A	B	C	L	W	T		
CTL8-10	#8 Str.	10	1 ¹ / ₃₂	1/2	7/32	1 ¹ / ₃₂	3/8	1/16	RED	
CTL8-14		1/4	1 ¹ / ₃₂	1 ⁹ / ₃₂	1/4	1 ¹ / ₁₆	7/16	1/16		
CTL8-516		5/16	1 ¹ / ₃₂	5/8	9/32	1 ¹ / ₁₆	9/16	1/16		
CTL6-10	#6 Str. or #6 Weld	10	7/16	1 ¹ / ₃₂	7/32	1 ¹ / ₃₂	7/16	1/16	BLUE	
CTL6-14		1/4	7/16	1 ¹ / ₃₂	7/32	1 ¹ / ₃₂	7/16	1/16		
CTL6-516		5/16	7/16	2 ¹ / ₃₂	9/32	1 ¹ / ₃₂	1 ⁹ / ₃₂	1/16		
CTL6-38	#4 Str.	3/8	7/16	2 ¹ / ₃₂	9/32	1 ¹ / ₃₂	1 ⁹ / ₃₂	1/16	GRAY	
CTL4-10		10	1/2	1 ⁹ / ₃₂	1/4	1 ³ / ₈	1 ⁷ / ₃₂	3/32		
CTL4-14		1/4	1/2	1 ⁹ / ₃₂	1/4	1 ³ / ₈	1 ⁷ / ₃₂	3/32		
CTL4-516	#2 Str. or #3 Weld	5/16	1/2	2 ¹ / ₃₂	3/8	1 ¹ / ₃₂	1 ⁹ / ₃₂	1/16	BROWN	
CTL4-38		3/8	1/2	2 ¹ / ₃₂	5/16	1 ¹ / ₃₂	1 ⁹ / ₃₂	1/16		
CTL2-14		1/4	1 ⁹ / ₃₂	2 ¹ / ₃₂	1/4	1 ¹ / ₂	9/16	3/32		
CTL2-516	#1 Str. or #2 Weld	5/16	1 ⁹ / ₃₂	7/8	3/8	1 ²³ / ₃₂	9/16	3/32	GREEN	
CTL2-38		3/8	1 ⁹ / ₃₂	2 ⁹ / ₃₂	3/8	1 ³ / ₄	9/16	3/32		
CTL2-12		1/2	1 ⁹ / ₃₂	1 ¹ / ₁₆	1/2	1 ²⁹ / ₃₂	3/4	1/16		
CTL1-14	#1 Weld	1/4	1 ⁹ / ₃₂	2 ¹ / ₃₂	1/4	1 ¹ / ₂	2 ¹ / ₃₂	3/32	PINK	
CTL1-516		5/16	1 ⁹ / ₃₂	7/8	3/8	1 ²³ / ₃₂	2 ¹ / ₃₂	3/32		
CTL1-38		3/8	1 ⁹ / ₃₂	2 ⁹ / ₃₂	3/32	1 ³ / ₄	2 ¹ / ₃₂	3/32		
CTL1-12	1/0 Str. or #1 Weld	1/2	1 ⁹ / ₃₂	1 ¹ / ₄	1/2	2 ²⁹ / ₃₂	3/4	3/32	BLACK	
CTL10-516		5/16	1 ¹ / ₁₆	7/8	3/8	1 ¹³ / ₁₆	3/4	1/8		
CTL10-38		3/8	1 ¹ / ₁₆	2 ⁹ / ₃₂	3/8	1 ⁷ / ₈	3/4	1/8		
CTL10-12	2/0 Str. or 1/0 Weld	1/2	1 ¹ / ₁₆	1 ¹ / ₄	1/2	2 ²⁹ / ₃₂	3/4	1/8	ORANGE	
CTL20-38		3/8	1 ¹ / ₁₆	2 ⁹ / ₃₂	3/8	2 ¹ / ₃₂	1 ¹ / ₁₆	1/8		
CTL20-12		1/2	1 ¹ / ₁₆	1 ¹ / ₄	1/2	2 ¹¹ / ₃₂	1 ¹ / ₁₆	1/8		
CTL30-38	3/0 Str. or 2/0 Weld	3/8	1 ¹ / ₁₆	2 ⁹ / ₃₂	3/8	2 ¹ / ₃₂	2 ⁹ / ₃₂	1/8	PURPLE	
CTL30-12		1/2	1 ¹ / ₁₆	1 ¹ / ₄	1/2	2 ¹¹ / ₃₂	2 ⁹ / ₃₂	1/8		
CTL40-38		3/8	1 ¹ / ₁₆	2 ⁹ / ₃₂	3/8	2 ⁵ / ₃₂	1 ¹ / ₃₂	1/8		
CTL40-12	4/0 Str. or 3/0 Weld	1/2	1 ⁹ / ₁₆	1 ¹ / ₄	1/2	2 ¹ / ₂	1 ¹ / ₃₂	1/8	YELLOW	
CTL250-12		250 kcmil or 4/0 Weld	1/2	1 ¹ / ₃₂	1 ¹ / ₄	1/2	2 ¹⁹ / ₃₂	1 ¹ / ₈		1/8
CTL300-12		300 kcmil	1/2	1 ¹ / ₃₂	1 ¹ / ₄	1/2	2 ²⁵ / ₃₂	1 ¹ / ₁₆		5/32
CTL350-12	350 kcmil	1/2	1 ¹ / ₃₂	1 ¹ / ₄	1/2	2 ²⁵ / ₃₂	1 ¹¹ / ₃₂	5/32	RED	
CTL400-12	400 kcmil	1/2	1 ¹ / ₃₂	1 ¹ / ₄	1/2	3 ¹ / ₁₆	1 ¹ / ₃₂	5/32	BLUE	
CTL400-58		5/8	1 ¹ / ₃₂	1 ¹ / ₁₆	5/8	3 ¹ / ₂	1 ¹ / ₃₂	5/32		
CTL500-12	500 kcmil	1/2	1 ¹ / ₃₂	1 ¹ / ₄	1/2	3 ¹ / ₄	1 ¹⁹ / ₃₂	7/32	BROWN	
CTL500-58		5/8	1 ¹ / ₃₂	1 ¹ / ₁₆	5/8	3 ³ / ₁₆	1 ¹⁹ / ₃₂	7/32		
CTL600-58	600 kcmil	5/8	1 ¹ / ₁₆	1 ¹ / ₁₆	5/8	3 ²³ / ₃₂	1 ³ / ₄	1/2	GREEN	
CTL750-58	750 kcmil	5/8	1 ¹ / ₂	1 ¹ / ₁₆	5/8	3 ²⁵ / ₃₂	1 ²⁹ / ₃₂	5/32	BLACK	
CTL1000-58	1,000 kcmil	5/8	1 ¹ / ₄	1 ¹ / ₁₆	5/8	4 ¹ / ₃₂	2 ¹ / ₄	5/32	N/A	