

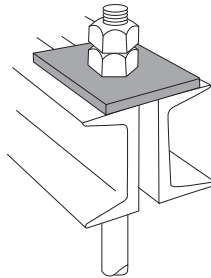
Beam Clamps

Beam Fittings

C781 Square Washer

***Finishes**

- B
- EDG
- EG
- SS6



Used for beam applications.

For channel applications use AB241.

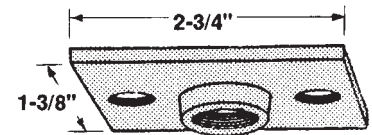
STD.
PACK:
50

Cat. No.	Rod Size (in.)	Hole Size (in.)	Overall Dimensions	Wt./C lb.
C781-3/8*	3/8	7/16	3 x 3 x 3/16	27
C781-1/2*	1/2	9/16	3 x 3 x 3/16	27
C781-5/8*	5/8	11/16	3 x 3 x 1/4	47
C781-3/4*	3/4	13/16	3 x 3 x 1/4	42
C781-7/8*	7/8	15/16	4 x 4 x 3/8	85
C781-1*	1	1-1/8	4 x 4 x 3/8	160

M742R Ceiling Flange

***Finishes**

- B
- EG

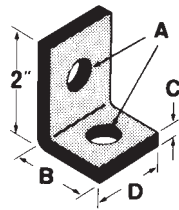


Cat. No.	Rod Size (in.)	Wt./C lb.
M742R-3/8*	3/8	16
M742R-1/2*	1/2	16

540 Side Beam Hanger Clip

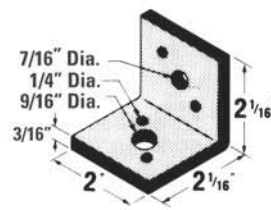
***Finishes**

- B
- EG
- GoldGalv®



Cat. No.	A (in.)	B (in.)	C (in.)	D (in.)	Wt./C lb.
540-3/8*	7/16	1-7/8	1/4	7/8	38
540-1/2*	9/16	1-7/8	1/4	1-5/8	36
540-5/8*	11/16	2-1/2	3/8	2	84
540-3/4*	13/16	2-1/2	3/8	2	113

542 Side Beam Hanger Clip

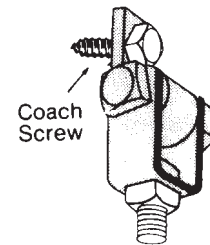


Cat. No.	Rod Size (in.)	Design Load/lb.	Wt./C lb.
542-3/8	3/8	610	35
542-1/2	1/2	1000	38

Standard Finish - GoldGalv®

For 3/8 in. and 1/2 in. rods.

S541 Swing Connector



3/8 in. x 1-3/4 in. bolt, nut and clevis included.

Cat. No.	Rod Size (in.)	Wt./C lb.
S541-3/8	3/8	31

Standard Finish - GoldGalv®

For use with wood beam.

Materials

HDG(C)
EG(C)
(No suffix)

Hot-Dipped Galvanized
ElectroGalvanized
GoldGalv®

SS6(C)
B

Stainless Steel 316
Bare