

Nonmetallic Sheathed Cable

Connectors



Cat. No.	Trade Size (in.)	Clamping Range (in.)		Suggested Application NMD90 (loomex)
		Min.	Max.	
One Screw Fittings (Aluminum)				
CI2166	1/2	0.50	0.90	8/3-6/3
CI2167	3/4	0.71	1.10	6/3-4/3
Duplex Fittings (Zinc Alloy)				
One Screw CI2175	3/8	0.15	0.65	14/2-10/2; 14/3-10/3
Nonmetallic Fittings				
CI3360	1/2	0.30	0.60	14/2-10/2; 14/3-10/3 2 cables: 14/2-12/2
CI4004		0.21	0.42	14/2-10/2; 14/3-10/3 2 cables: 14/2-12/2
W100LX-D		0.21	0.42	14/2-10/2; 14/3-10/3 2 cables: 14/2-12/2
One Screw Fittings (Steel)				
CI4040	3/8	0.19	0.57	14/2-10/2; 14/3-10/3 2 cables: 14/2
CI9049		0.13	0.37	14/2-10/2; 14/3-12/3

CI2166 / CI2167



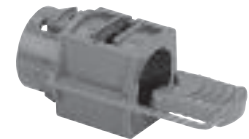
Zinc Die Cast Locknut

CI2175



Zinc Die Cast Locknut

CI3360



CI4004 / W100LX-D



CI4040



CI9049



All NMD90 fittings are also suitable for NMWU90 of equivalent diameters, in dry locations
NOTE: 3/8 in. trade size connectors require a 1/2 in. knockout

Technical improvements are constantly taking place in the electrical industry. Cable manufacturers are changing their products from time to time. Accordingly, it is strongly suggested that you verify the cable size with the cable manufacturer prior to selecting a fitting.

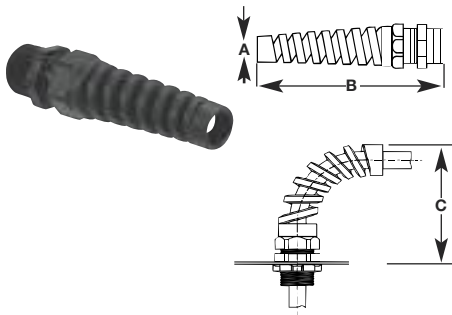
Flexible Cord

Nonmetallic Fittings

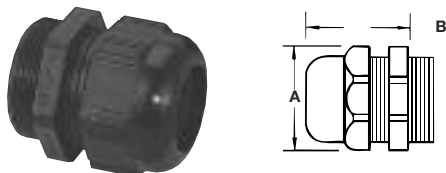
- Liquidtight and stainrelief
- Corrosion resistant polyamide (nylon)
- Vibration proof
- No twisted cords
- Indoor or outdoor use
- Quick installation
- Working temperatures: -30°C (-22°F) to 100°C (212°F) and up to 150°C (302°F) for short periods of time
- Resistant to: Salt water, weak acids, weak alkalis, alcohol, acetone, ether, benzene, gas, mineral oil, animal and vegetable oils



CISLF-9-03 / CISLF-21-06 CISLFR-9-03 / CISLFR-21-06



CISL-9-03 / CISL-21-06 CISL-29 / CISL-48 CISLR-9-03 / CISLR-21-06



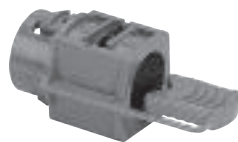
Cat. No.	Trade Size (in.)	KO Size (in.)	Dia. Over Cable Jacket (in.)		Throat (in.)	Dimensions (in.)		
			Min.	Max.		A	B	C
"Skintight" Straight Cord Fittings (Nylon)								
CISLR-9-03	3/8	3/8	0.079	0.236	0.375	3/4	1	—
CISL-9-03	3/8	3/8	0.187	0.312	0.375	3/4	1	—
CISLR-13-04	1/2	1/2	0.197	0.354	0.500	15/16	1-1/8	—
CISL-13-04	1/2	1/2	0.270	0.480	0.500	15/16	1-1/8	—
CISLR-21-04	1/2	1/2	0.354	0.629	0.600	1-5/16	1-3/16	—
CISL-21-04	1/2	1/2	0.545	0.709	0.600	1-5/16	1-3/16	—
CISLR-21-06	3/4	3/4	0.354	0.629	0.667	1-5/16	1-3/16	—
CISL-21-06	3/4	3/4	0.545	0.709	0.667	1-5/16	1-3/16	—
90° "Skintight" Cord Fittings (Nylon)								
CISLFR-9-03	3/8	3/8	0.079	0.236	0.375	5/16	2-7/16	1-3/4
CISLF-9-03	3/8	3/8	0.187	0.312	0.375	5/16	2-7/16	1-3/4
CISLFR-13-04	1/2	1/2	0.197	0.354	0.500	1/2	3-1/2	2-1/4
CISLF-13-04	1/2	1/2	0.270	0.480	0.500	1/2	3-1/2	2-1/4
CISLFR-21-04	1/2	1/2	0.354	0.629	0.600	3/4	4-1/2	3
CISLF-21-04	1/2	1/2	0.545	0.709	0.600	3/4	4-1/2	3
CISLFR-21-06	3/4	3/4	0.354	0.629	0.667	3/4	4-1/2	3
CISLF-21-06	3/4	3/4	0.545	0.709	0.667	3/4	4-1/2	3



Cat. No.	Trade Size (in.)	Drill Hole (in.)	Dia. Over Cable Jacket (in.)		Throat (in.)	Dimensions (in.)	
			Min.	Max.		A	B
"Skintight" Metric Thread, Straight Cord Fittings (Nylon)							
CISL-29	PG29	1-1/2	0.709	0.984	1.175	1-11/16	1-5/8
CISL-36	PG36	1-7/8	0.866	1.260	1.436	2-1/8	2
CISL-42	PG42	2-3/16	1.260	1.495	1.712	2-3/8	2-1/8
CISL-48	PG48	2-3/8	1.457	1.732	1.920	2-5/8	2-1/8

CI3360

Dry Location



Cat. No.	Trade Size (in.)	KO Size (in.)	Clamping Range (in.)	
			Min.	Max.
Nonmetallic Fittings				
CI3360	1/2	1/2	0.30	0.60

Complete with metric locknut
Working temperatures : -30°C (-22°F) to 80°C (176°F)

CI1703-PL* / CI1706-PL*



Cat. No.	Trade Size (in.)
Nylon Locknuts	
CI1703-PL*	3/8
CI1704-PL*	1/2
CI1706-PL*	3/4

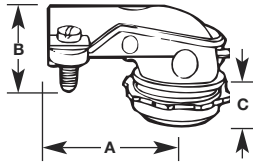
* Not CSA certified

Specification Guide

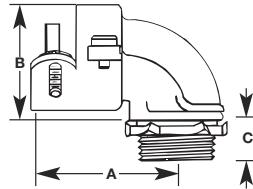
Cable Connectors



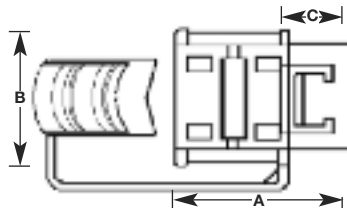
CI2210 / CI2236



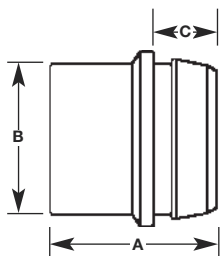
CI2238 / CI2240



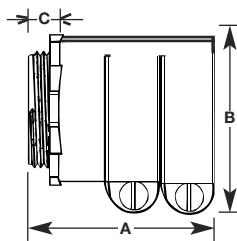
CI3360



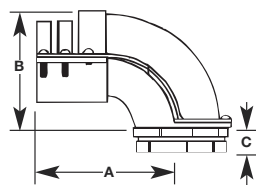
CI4004



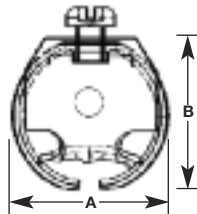
CI4000



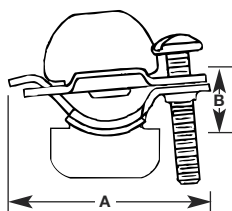
CI4090



CI4040



CI9049



Cat. No.	Trade Size	Clamping Range		Dimensions		
		Min.	Max.	A	B	C
90° Connectors (Zinc Alloy)						
CI2210	3/8	0.40	0.63	1-3/8	3/4	3/8
CI2211	1/2	0.65	0.97	1-11/16	1-1/16	3/8
CI2214	3/4	0.77	1.12	1-3/4	1-1/8	1/2
CI2216	1	1.10	1.57	2	1-5/8	5/8
CI2218	1-1/4	1.27	1.75	3-3/8	2-1/8	5/8
CI2234	1-1/2	1.70	2.15	5-1/4	3-1/4	3/4
CI2236	2	2.00	2.62	5-3/8	3-1/4	3/4
90° Connectors (Aluminum)						
CI2238	2-1/2	2.50	3.08	6-1/4	5-1/2	3/4
CI2240	3	2.95	3.55	7-1/4	6-5/8	3/4
Nonmetallic Connector						
CI3360	1/2	0.30	0.60	1-5/16	1-1/16	7/16
Two Screw Connector (Aluminum)						
CI4000	4	4.40	4.55	4-7/8	5-3/4	7/8
Nonmetallic Connector						
CI4004	1/2	0.21	0.42	15/16	7/8	3/8
One Screw Connectors (Steel)						
CI4040	3/8	0.19	0.57	15/16	7/8	—
CI9049	3/8	0.13	0.37	1-3/8	5/16	—
90° Connector (Aluminum)						
CI4090	4	4.17	4.62	8-1/4	6	1

Technical improvements are constantly taking place in the electrical industry. Cable manufacturers are changing their products from time to time. Accordingly, it is strongly suggested that you verify the cable size with the cable manufacturer prior to selecting a fitting.