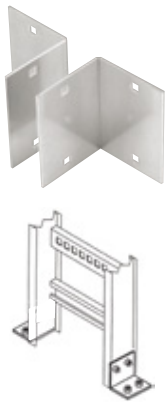




Branch pivot connectors

Allows cables to run from one tray level to another.

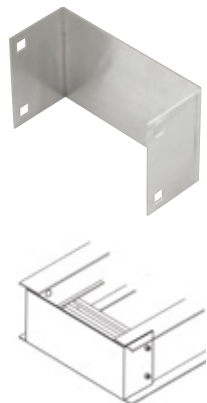
Cat. No.	Material	Side rail height (in.)
ABW-4-BPC	Aluminum	4
ABW-5-BPC		5
ABW-6-BPC		6
ABW-7-BPC		7



Box-to-tray plates

- Designed to secure tray to electrical panels or boxes, walls or end supports
- Furnished in pairs with hardware
- Kit contents: 8 bolts, 8 nuts, 8 lock washers, 3/8" diameter

Cat. No.	Material	Side rail height (in.)
ABW-4-BSP	Aluminum	4
ABW-5-BSP		5
ABW-6-BSP		6
ABW-7-BSP		7



Closure end plate

- Provides closure for any tray end
- Packaged with hardware
- Kit contents: 4 bolts, 4 nuts, 4 washers, 3/8" diameter

Cat. No.	Material	Side rail height (in.)	Tray width (in.)
ABW-4(*)-CEP	Aluminum	4	6
			9
ABW-5(*)-CEP		5	12
			18
ABW-6(*)-CEP		6	24
			30
ABW-7(*)-CEP		7	36
			42

(*) Insert tray width

T&B aluminum cable tray is composed of two distinct systems, H-style and U-style. These systems are interchangeable.