

Nonmetallic Sheathed Cable

Fittings



Cat. No.	Trade Size (in.)	Clamping Range (in.)		Suggested Application
		Min.	Max.	
One Screw Fittings (Aluminum)				
CI2166	1/2	0.50	0.90	8/3 – 6/3
CI2167	3/4	0.71	1.10	6/3 – 4/3
Duplex Fittings (Zinc Alloy)				
One Screw CI2175	3/8	0.15	0.65	14/2 – 10/2; 14/3 – 10/3
Nonmetallic Fittings				
CI3360	1/2	0.30	0.60	14/2 – 10/2; 14/3 – 10/3 2 cables: 14/2 – 12/2
CI4004†		0.21	0.42	14/2 – 12/2 – 10/2 – 14/3 – 12/3 – 10/3 2 cables: 2 x 14/2 – 2 x 12/2 1 x 14/2 + 1 x 12/2
W100LX-D		0.21	0.42	
CI4006*†	3/4	0.22	0.65	12/2 – 10/2 – 8/2 – 6/2 – 14/3 – 12/3 – 10/3 – 8/3 – 6/3 2 cables: 2 x 12/2 – 2 x 10/2 1 x 12/2 + 1 x 10/2
W101LX*		0.22	0.65	
One Screw Fittings (Steel)				
CI4040	3/8	0.19	0.57	14/2 – 10/2; 14/3 – 10/3 2 cables: 14/2
CI9049		0.13	0.37	14/2 – 10/2; 14/3 – 12/3

* For a complete catalogue number add suffix JAR 40, JAR 80 or JAR200 according to the desired quantity (i.e.: W101LX-JAR40, W101LX-JAR80 or W101LX-JAR200).

† UL Listed

CI2166 / CI2167



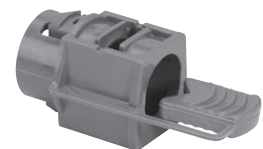
Zinc Die Cast Locknut

CI2175



Zinc Die Cast Locknut

CI3360



CI4004 / W100LX-D



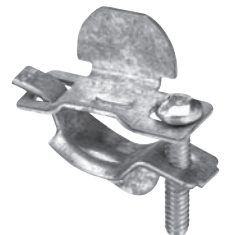
CI4006 / W101LX



CI4040



CI9049



See specification guide section for dimensions (D38-D39).

All NMD90 fittings are also suitable for NMWU90 of equivalent diameters, in dry locations. **NOTE:** 3/8 in. trade size connectors require a 1/2 in. knockout

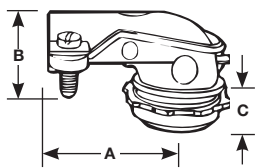
Technical improvements are constantly taking place in the electrical industry. Cable manufacturers are changing their products from time to time. Accordingly, it is strongly suggested that you verify the cable size with the cable manufacturer prior to selecting a fitting.

Specification Guide

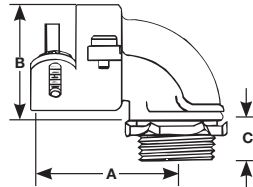
Cable Connectors



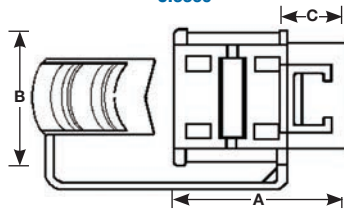
CI2210 / CI2236



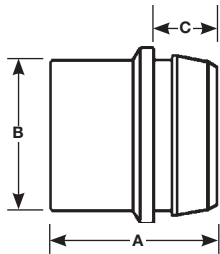
CI2238 / CI2240



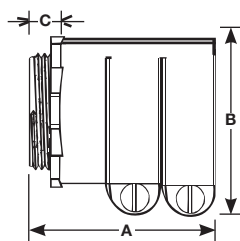
CI3360



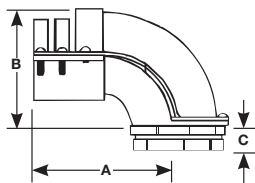
CI4004



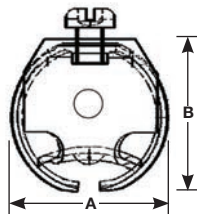
CI4000



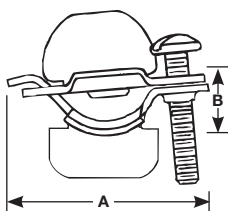
CI4090



CI4040



CI9049



Cat. No.	Trade Size	Clamping Range		Dimensions		
		Min.	Max.	A	B	C
90° Connectors (Zinc Alloy)						
CI2210	3/8	0.40	0.63	1-3/8	3/4	3/8
CI2211	1/2	0.65	0.97	1-11/16	1-1/16	3/8
CI2214	3/4	0.77	1.12	1-3/4	1-1/8	1/2
CI2216	1	1.10	1.57	2	1-5/8	5/8
CI2218	1-1/4	1.27	1.75	3-3/8	2-1/8	5/8
CI2234	1-1/2	1.70	2.15	5-1/4	3-1/4	3/4
CI2236	2	2.00	2.62	5-3/8	3-1/4	3/4
CI4090	4	4.17	4.62	8-1/4	6	1
90° Connectors (Aluminum)						
CI2238	2-1/2	2.50	3.08	6-1/4	5-1/2	3/4
CI2240	3	2.95	3.55	7-1/4	6-5/8	3/4
Nonmetallic Connector						
CI3360	1/2	0.30	0.60	1-5/16	1-1/16	7/16
Two Screw Connector (Aluminum)						
CI4000	4	4.40	4.55	4-7/8	5-3/4	7/8
Nonmetallic Connector						
CI4004	1/2	0.21	0.42	15/16	7/8	3/8
One Screw Connectors (Steel)						
CI4040	3/8	0.19	0.57	15/16	7/8	—
CI9049	3/8	0.13	0.37	1-3/8	5/16	—

Technical improvements are constantly taking place in the electrical industry. Cable manufacturers are changing their products from time to time. Accordingly, it is strongly suggested that you verify the cable size with the cable manufacturer prior to selecting a fitting.