

Nonmetallic Sheathed Cable

Fittings



| Cat. No. | Trade Size (in.) | Clamping Range (in.) | | Suggested Application |
|--------------------------------------|------------------|----------------------|------|--|
| | | Min. | Max. | |
| One Screw Fittings (Aluminum) | | | | |
| CI2166 | 1/2 | 0.50 | 0.90 | 8/3 – 6/3 |
| CI2167 | 3/4 | 0.71 | 1.10 | 6/3 – 4/3 |
| Duplex Fittings (Zinc Alloy) | | | | |
| One Screw CI2175 | 3/8 | 0.15 | 0.65 | 14/2 – 10/2; 14/3 – 10/3 |
| Nonmetallic Fittings | | | | |
| CI3360 | 1/2 | 0.30 | 0.60 | 14/2 – 10/2; 14/3 – 10/3 2 cables: 14/2 – 12/2 |
| CI4004† | | 0.21 | 0.42 | 14/2 – 12/2 – 10/2 – 14/3 – 12/3 – 10/3 2 cables: 2 x 14/2 – 2 x 12/2 1 x 14/2 + 1 x 12/2 |
| W100LX-D | | 0.21 | 0.42 | |
| CI4006*† | 3/4 | 0.22 | 0.65 | 12/2 – 10/2 – 8/2 – 6/2 – 14/3 – 12/3 – 10/3 – 8/3 – 6/3 2 cables: 2 x 12/2 – 2 x 10/2 1 x 12/2 + 1 x 10/2 |
| W101LX* | | 0.22 | 0.65 | |
| One Screw Fittings (Steel) | | | | |
| CI4040 | 3/8 | 0.19 | 0.57 | 14/2 – 10/2; 14/3 – 10/3 2 cables: 14/2 |
| CI9049 | | 0.13 | 0.37 | 14/2 – 10/2; 14/3 – 12/3 |

* For a complete catalogue number add suffix JAR 40, JAR 80 or JAR200 according to the desired quantity (i.e.: W101LX-JAR40, W101LX-JAR80 or W101LX-JAR200).

† UL Listed

CI2166 / CI2167



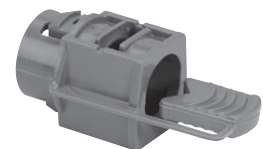
Zinc Die Cast Locknut

CI2175



Zinc Die Cast Locknut

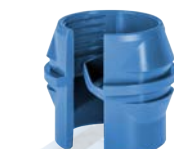
CI3360



CI4004 / W100LX-D



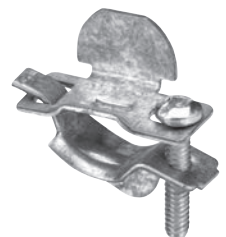
CI4006 / W101LX



CI4040



CI9049



See specification guide section for dimensions (D38-D39).

All NMD90 fittings are also suitable for NMWU90 of equivalent diameters, in dry locations. **NOTE:** 3/8 in. trade size connectors require a 1/2 in. knockout

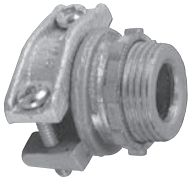
Technical improvements are constantly taking place in the electrical industry. Cable manufacturers are changing their products from time to time. Accordingly, it is strongly suggested that you verify the cable size with the cable manufacturer prior to selecting a fitting.

Armoured Cable / Flexible Conduit

Fittings



CI2104 / CI2124



Zinc Die Cast Locknut

CI2163



Zinc Die Cast Locknut

CI2166 / CI2172



Zinc Die Cast Locknut

| Cat. No. | Trade Size (in.) | Clamping Range (in.) | | Suggested Application AC90 (BX) | Flex. Conduit |
|---|------------------|----------------------|------|--|---------------|
| | | Min. | Max. | | |
| Two Screw Fittings (Cast Aluminium Body and Clamp) | | | | | |
| CI2104 | 1/2 | 0.45 | 0.59 | 14/2-10/2; 14/3-10/3; 14/4-12/4 ACWU90: 10/2; 12/3-10/3; 12/4; 12/5 | 5/16 |
| CI2106 | 3/4 | 0.55 | 0.78 | 10/2-8/2; 10/3-8/3; 12/4-10/4 ACWU90: 3/1-2/1; 8/2; 10/3-8/3; 10/4; 12/5 | 3/8-7/16 |
| CI2108 | 1 | 0.69 | 1.01 | 1/0/1-2/0/1; 8/2-6/2; 8/3-6/3; 8/4 ACWU90: 3/1-3/0/1; 6/2-4/2; 8/3-4/3; 8/4-6/4 | 1/2 |
| CI2110 | 1-1/4 | 0.84 | 1.33 | 1/0/1-350/1; 6/2-2/2; 6/3-2/3; 8/4-4/4 ACWU90: 1/0/1-400/1 6/2-1/2; 6/3-2/3; 8/4-2/4 | 3/4 |
| CI2112 | 1-1/2 | 1.06 | 1.57 | 4/0/1-600/1; 2/2-1/2; 4/3-2/0/3; 4/4-1/4 ACWU90: 4/0/1-600/1; 1/0/2-3/0/2; 4/3-2/0/3; 6/4-1/0/4 | 1 |
| CI2116 | 2 | 1.38 | 2.06 | 500/1-1000/1; 1/0/3-300/3; 1/4-3/0/4 ACWU90: 500/1-1000/1; 2/0/2-350/2; 1/0/3-300/3; 1/4-4/0/4 | 1-1/4, 1-1/2 |
| CI2120 | 2-1/2 | 1.95 | 2.47 | 400/3 - 500/3 300/4 - 500/4 | 1-1/2, 2 |
| CI2124 | 3 | 2.25 | 3.57 | 500/4 - 750/4 | 2, 2-1/2 |
| One Screw Fitting (Zinc Alloy) | | | | | |
| CI2163 | 3/8 | 0.35 | 0.61 | 14/2-10/2; 14/3-10/3; 14/4-12/4 | 3/8 |
| One Screw Fittings (Aluminum) | | | | | |
| CI2166 | 1/2 | 0.50 | 0.90 | 12/2-8/2; 12/3-8/3; 14/4-10/4 | 1/2 |
| CI2167 | 3/4 | 0.71 | 1.10 | 1/0/1-4/0/1; 6/2-4/2; 8/3-3/3; 8/4-6/4 | 3/4 |
| CI2169 | 1 | 1.16 | 1.40 | 250/1-300/1; 2/3; 4/4 | 1 |
| CI2170 | 1-1/4 | 1.32 | 1.77 | 400/1-600/1; 1/2; 1/3-2/0/3; 1/4 | 1-1/4 |
| CI2171 | 1-1/2 | 1.77 | 2.05 | 1000/1; 4/0/3 ACWU90: 1000/1; 4/0/3; 3/0/4 | 1-1/2 |
| CI2172 | 2 | 2.10 | 2.54 | 350/3-400/3 ACWU90: 1500/1; 500/2; 350/3-400/3; 250/4-300/4 | 2 |

Also suitable for ACWU90 (of equivalent diameters) in dry locations. CI2104/CI2116 fittings may also be used for RA90 cables of equivalent diameters. A non-ferrous connector and locknut must be used to terminate a single conductor cable when nominal current exceeds 200 A

NOTE: 3/8 in. trade size fitting require a 1/2 in. knockout

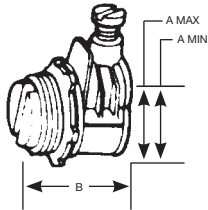
Technical improvements are constantly taking place in the electrical industry. Cable manufacturers are changing their products from time to time. Accordingly, it is strongly suggested that you verify the cable size with the cable manufacturer prior to selecting a fitting. See specification guide section for dimensions (D38-D39).

Specification Guide

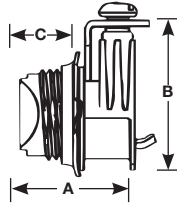
Cable Fittings



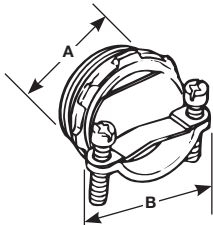
L-16



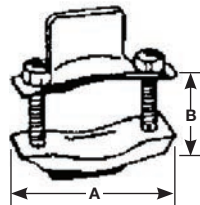
CI70 / CI72



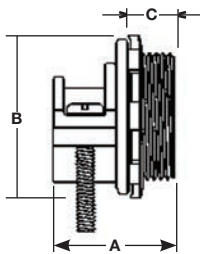
CI804 / CI816



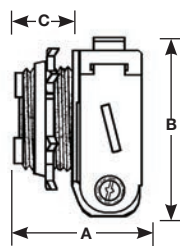
CI2060 / CI2061



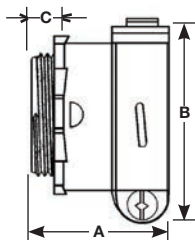
CI2104 / CI2116



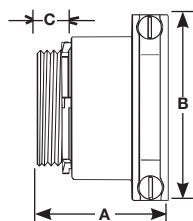
CI2163



CI2166 / CI2172



CI2173 / CI2174

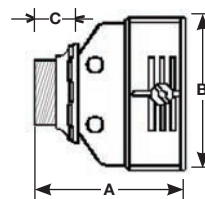


| Cat. No. | Trade Size (in.) | Clamping Range (in.) | | Dimensions (in.) | | |
|--|------------------|----------------------|------|------------------|---------|-------|
| | | Min. | Max. | A | B | C |
| One Screw Connectors (Zinc Alloy) | | | | | | |
| CI70 | 3/8 | 0.13 | 0.70 | 1 | 1-1/8 | 1/2 |
| L-16 | 3/8 | 0.12 | 0.63 | 1 | — | — |
| CI71 | 1/2 | 0.33 | 0.95 | 1-3/8 | 1-1/2 | 1/2 |
| CI72 | 3/4 | 0.60 | 1.15 | 1-1/2 | 1-13/16 | 1/2 |
| Two Screw Connectors (Zinc Alloy) | | | | | | |
| CI804 | 3/8 | 0.18 | 0.64 | 7/8 | 1-1/16 | — |
| CI806 | 3/4 | 0.41 | 0.82 | 1-3/8 | 1-3/16 | |
| CI808 | 1 | 0.50 | 1.04 | 1-1/8 | 2 | |
| CI810 | 1-1/4 | 0.56 | 1.06 | 1-5/16 | 2-3/16 | |
| CI812 | 1-1/2 | 0.63 | 1.60 | 1-1/2 | 2-5/8 | |
| CI816 | 2 | 0.86 | 2.06 | 1-9/16 | 3 | |
| Two Screw Connectors (Steel) | | | | | | |
| CI2060 | 3/8 | 0.11 | 0.60 | 1-1/2 | 5/8 | — |
| CI2061 | 3/4 | 0.15 | 0.90 | 1-3/4 | 13/16 | |
| Two Screw Connectors (Cast Aluminum Body and Clamp) | | | | | | |
| CI2104 | 1/2 | 0.45 | 0.59 | 1-3/16 | 1-3/8 | 19/32 |
| CI2106 | 3/4 | 0.55 | 0.78 | 1-3/8 | 1-11/16 | 5/8 |
| CI2108 | 1 | 0.69 | 1.01 | 1-1/2 | 1-15/16 | 3/4 |
| CI2110 | 1-1/4 | 0.84 | 1.33 | 1-1/2 | 2-3/8 | 9/16 |
| CI2112 | 1-1/2 | 1.06 | 1.57 | 1-9/16 | 2-3/4 | 5/8 |
| CI2116 | 2 | 1.38 | 2.06 | 1-3/4 | 3-1/4 | 3/4 |
| One Screw Connector (Zinc Alloy) | | | | | | |
| CI2163 | 3/8 | 0.35 | 0.61 | 1 | 1-5/16 | 7/16 |
| One Screw Connectors (Aluminum) | | | | | | |
| CI2166 | 1/2 | 0.50 | 0.90 | 1-9/16 | 1-11/16 | 7/16 |
| CI2167 | 3/4 | 0.71 | 1.10 | 1-11/16 | 1-7/8 | 7/16 |
| CI2169 | 1 | 1.16 | 1.50 | 2 | 2-1/2 | 1/2 |
| CI2170 | 1-1/4 | 1.32 | 1.77 | 2-3/8 | 2-7/8 | 5/8 |
| CI2171 | 1-1/2 | 1.77 | 2.05 | 2-1/2 | 3-1/4 | 5/8 |
| CI2172 | 2 | 2.10 | 2.54 | 2-11/16 | 3-3/4 | 11/16 |
| Two Screw Connectors (Aluminum) | | | | | | |
| CI2173 | 2-1/2 | 2.05 | 3.07 | 3-1/8 | 4-9/16 | 3/4 |
| CI2174 | 3 | 2.25 | 3.57 | 3-3/8 | 5-5/16 | 15/16 |
| Duplex Connectors (Zinc Alloy) | | | | | | |
| CI2175 | 3/8 | 0.15 | 0.65 | 9/16 | 5/8 | 3/8 |
| CI2275* | 3/8 | 0.45 | 0.58 | 2 | 1-9/16 | 13/16 |

* Suitable for AC90 and ACG90: Clamping range for AC90 is 0.45–0.58 and for ACG90 is 0.47–0.57.

Technical improvements are constantly taking place in the electrical industry. Cable manufacturers are changing their products from time to time. Accordingly, it is strongly suggested that you verify the cable size with the cable manufacturer prior to selecting a fitting.

CI2175



CI2275

