

EVOLUTION™ 8AT SERIES POKE-THRU DEVICES



Evolution™ 8AT Series Poke-Thru Devices allow all power and communication devices to be recessed below floor level, and provide 4-gang capacity for power, communication, and A/V devices.

CODE REFERENCE

cULus Listed Metallic Outlet Boxes:
File E2961 Guide QCIT.

cULus Listed Nonmetallic Outlet Boxes and Fittings Classified for Fire Resistance:

File R8209 Guide CEYY.

Meets Article 300.21, 300.22(C) & 314 of NEC.



Evolution Series 8CTC Cover Assembly Lids open a full 180° to reduce the risk of damage when plugging in devices.



Cover Assemblies for the 8AT Series Poke-Thru Devices are available in a variety of finishes and service configurations for carpet or tile floor installations.

HOLE DIAMETER

Minimum:	8" [203mm]
Maximum:	8 1/8" [206mm]

COLOR OPTIONS



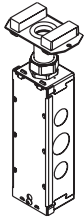
Evolution 8AT Series parts are available in the following powder coated finishes: "BK" black, "GY" gray, "NK" nickel, "BS" brass, and "BZ" bronze.

Custom color options are also available. Consult the factory for more information.

EVOLUTION™ 8AT SERIES POKE-THRU DEVICES

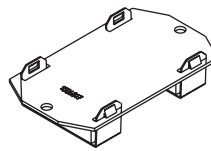
Evolution 8AT Series Bottom Feed Center Mount Device Plates Ordering Information

175CHA Bottom Housing Assembly



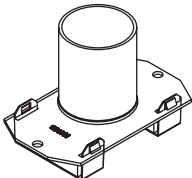
One-gang 3/4" trade size conduit housing assembly. Includes junction box attached to 3/4" trade size conduit for electrical power connections. For use on any one (1) of the three (3) gangs in the center compartment.

1BLHN Bottom Housing Assembly



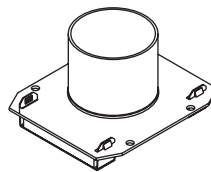
One-gang blank housing assembly. Designed to blank off compartment when no cable pass through is required. For use on any one (1) of the three (3) gangs in the center compartment.

1125CHA Bottom Housing Assembly



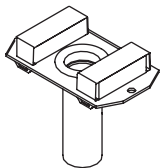
One-gang 1 1/4" trade size conduit housing assembly. For use on any one (1) of the three (3) gangs in the center compartment.

22CHA Bottom Housing Assembly



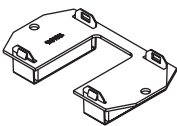
Two-gang 2" trade size conduit housing assembly. Used on 8AT Series devices. Covers two (2) of the three (3) gangs in the center compartment. Only for use with 8AT Series units.

175CHA-LJB Bottom Housing Assembly



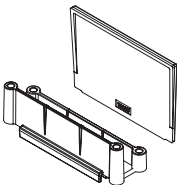
One-gang 3/4" trade size conduit housing assembly. Junction box not included.

1PTHA Bottom Housing Assembly



One-gang pass through housing assembly. Designed to allow pass through of communication cables when no conduit is required. For use on any one (1) of the three (3) gangs in the center.

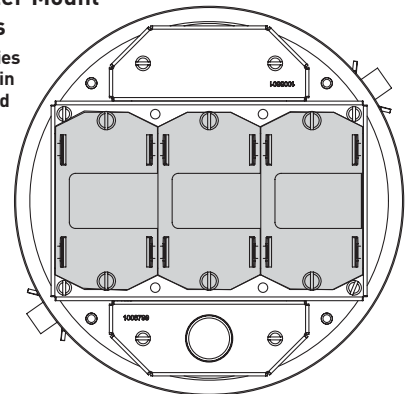
8DIV 8" [203mm] Divider



Divider allows for separation of services when required.

8AT Bottom Feed Center Mount Device Plate Locations

All Bottom Housing Assemblies on this page can be installed in the shaded locations indicated in this illustration.



Copper Cross Sectional Area of Commonly Used Conductors

SIZE	SOLID	
#24	0.00032 sq. in.	[0.20645mm ²]
#22	0.00050 sq. in.	[0.32258mm ²]
#14	0.00323 sq. in.	[2.08386mm ²]
#12	0.00512 sq. in.	[3.30321mm ²]
#10	0.00815 sq. in.	[5.25805mm ²]
#8	0.01296 sq. in.	[8.36127mm ²]

NOTE: Use above values for solid or stranded conductors.

CAUTION: Receptacle supplied with this Poke-Thru is not suitable for direct field wiring. Contact manufacturer for replacement. Field modifications will void UL Listing and Classification. Replacement receptacle is limited to this manufacturers' Catalog No 68REC.

8AT Copper Cross-Section

	OUTER CHANNELS	CENTER CHANNEL
Max Copper X-Section	0.0154 sq. in. [9.9mm ²]	0.0775 sq. in. [16.60mm ²]
Max # Conductors	(3) 12 AWG or (4) Cat 6A	(24) 14 AWG or (24) Cat 6A

NOTE: When using conductor sizes other than listed above, the aggregate cross-sectional area of the copper conductors shall not exceed the cross-sectional areas listed.

8AT Hole Sizes

FLOOR TYPE	HOLE SIZE (MIN.)	HOLE SIZE (MAX.)
Covered Floors (Carpet, Tile or Wood)	8" [203mm]	8 1/8" [206mm]
Bare Concrete or Terrazzo	8 1/16" [205mm]	8 1/8" [266mm]